

MATERIAL LEGEND

- P1.0 Pavement, Asphalt
- P1.1 Crack Fill, Refer to Specifications
- P1.2 Heavy Duty Asphalt Pavement, Refer to Detail 3/L501 and Specifications
- P1.3 Standard Duty Asphalt Pavement, Refer to Detail 1/L501 and Specifications
- P1.4 ALTERNATE: Heavy Duty Asphalt Pavement, Refer to Detail 3/L501 and Specifications
- P1.5 ALTERNATE: Standard Duty Asphalt Pavement, Refer to Detail 1/L501 and Specifications

1

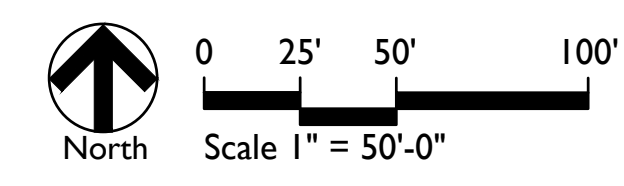


CONSTRUCTION DOCUMENTS FOR THE
NOBLESVILLE SCHOOLS 2025 PAVING
 Noblesville, IN
 MATERIALS AND NOTES PLAN - HAZEL DELLES

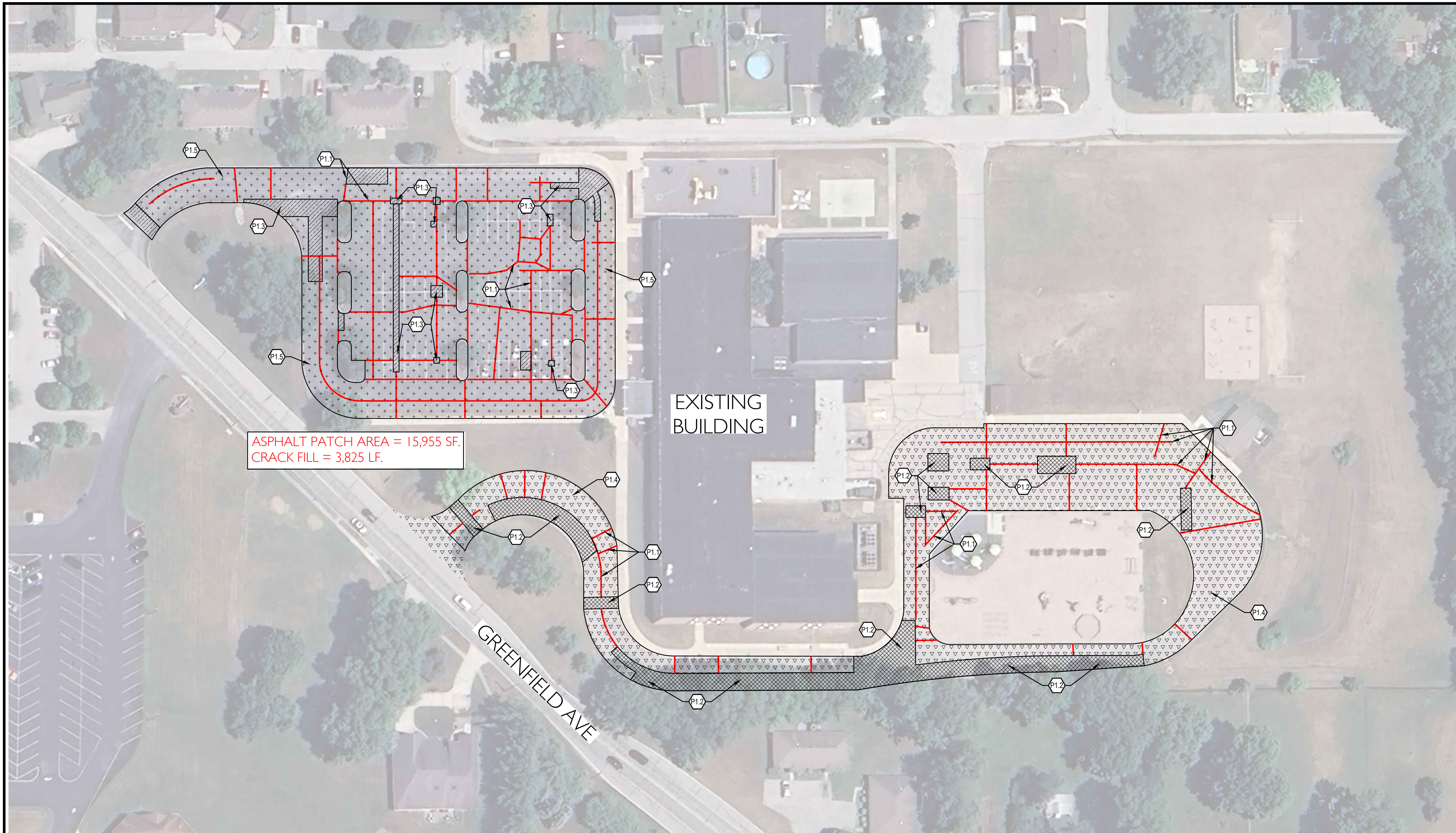
Revision	Date	Description
1	02-17-2025	Adendum #1

Date: 01/20/2025
 Project No: 25-1867
 Drawn by: SS/BH
 Checked by: CCH/FJP

These Drawings and Specifications, and all copies thereof are and shall remain the property and copyright of the Landscape Architect. They shall be used only with respect to this Project and are not to be used on any other Project or Work without prior written permission from the Landscape Architect.



Sheet No:
HDES-101



MATERIAL LEGEND

- P1.0 Pavement, Asphalt
- P1.1 Crack Fill, Refer to Specifications
- P1.2 Heavy Duty Asphalt Pavement, Refer to Detail 3/L501 and Specifications
- P1.3 Standard Duty Asphalt Pavement, Refer to Detail 1/L501 and Specifications
- P1.4 ALTERNATE: Heavy Duty Asphalt Pavement, Refer to Detail 3/L501 and Specifications
- P1.5 ALTERNATE: Standard Duty Asphalt Pavement, Refer to Detail 1/L501 and Specifications

1



CONSTRUCTION DOCUMENTS FOR THE
NOBLESVILLE SCHOOLS 2025 PAVING
 Noblesville, IN

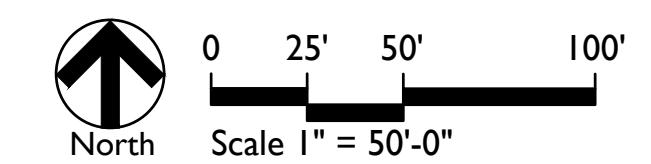
MATERIALS AND NOTES PLAN - STONY CREEK ES

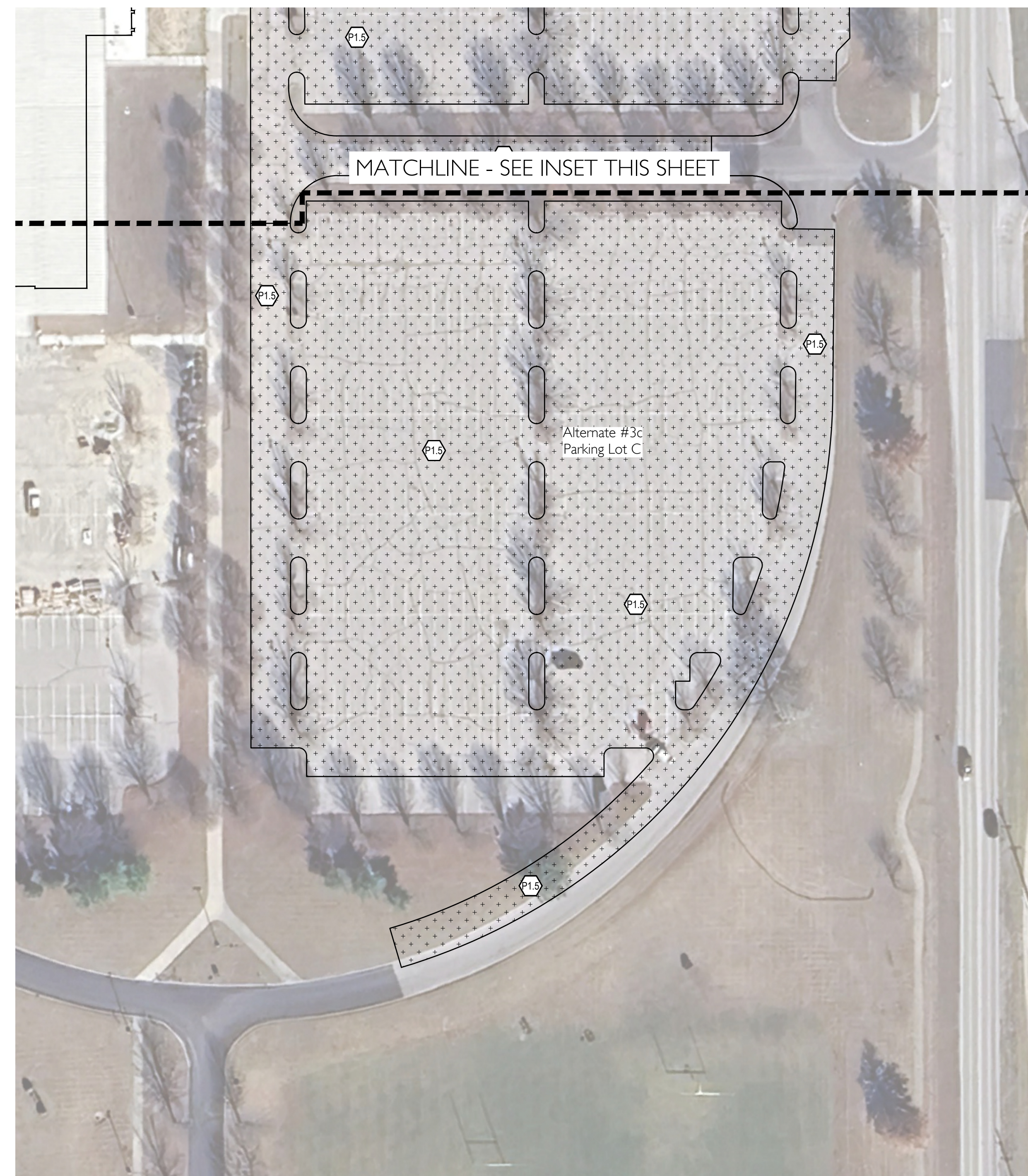
Revision	Date	Description
1	02-17-2025	Addendum #1

Date: 01/20/2025
 Project No: 25-1867
 Drawn by: SS/BH
 Checked by: CCH/FJP

These Drawings and Specifications, and all copies thereof are and shall remain the property and copyright of the Landscape Architect. They shall be used only with respect to this Project and are not to be used on any other Project or Work without prior written permission from the Landscape Architect.

Sheet No:
SCES-102





MATERIAL LEGEND

- P1.0 Pavement, Asphalt
- P1.1 Crack Fill, Refer to Specifications
- P1.2 Heavy Duty Asphalt Pavement, Refer to Detail 3/L501 and Specifications
- P1.3 Standard Duty Asphalt Pavement, Refer to Detail 1/L501 and Specifications
- P1.4 ALTERNATE: Heavy Duty Asphalt Pavement, Refer to Detail 3/L501 and Specifications
- P1.5 ALTERNATE: Standard Duty Asphalt Pavement, Refer to Detail 1/L501 and Specifications

1



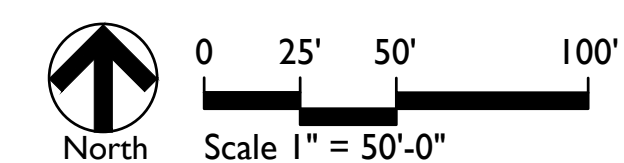
CONSTRUCTION DOCUMENTS FOR THE
NOBLESVILLE SCHOOLS 2025 PAVING
 Noblesville, IN
 MATERIALS AND NOTES PLAN - NOBLESVILLE HS

Revision	Date	Description
1	02-17-2025	Adendum #1

Date: 01/20/2025
 Project No: 25-1867
 Drawn by: SS/BH
 Checked by: CCH/FJP

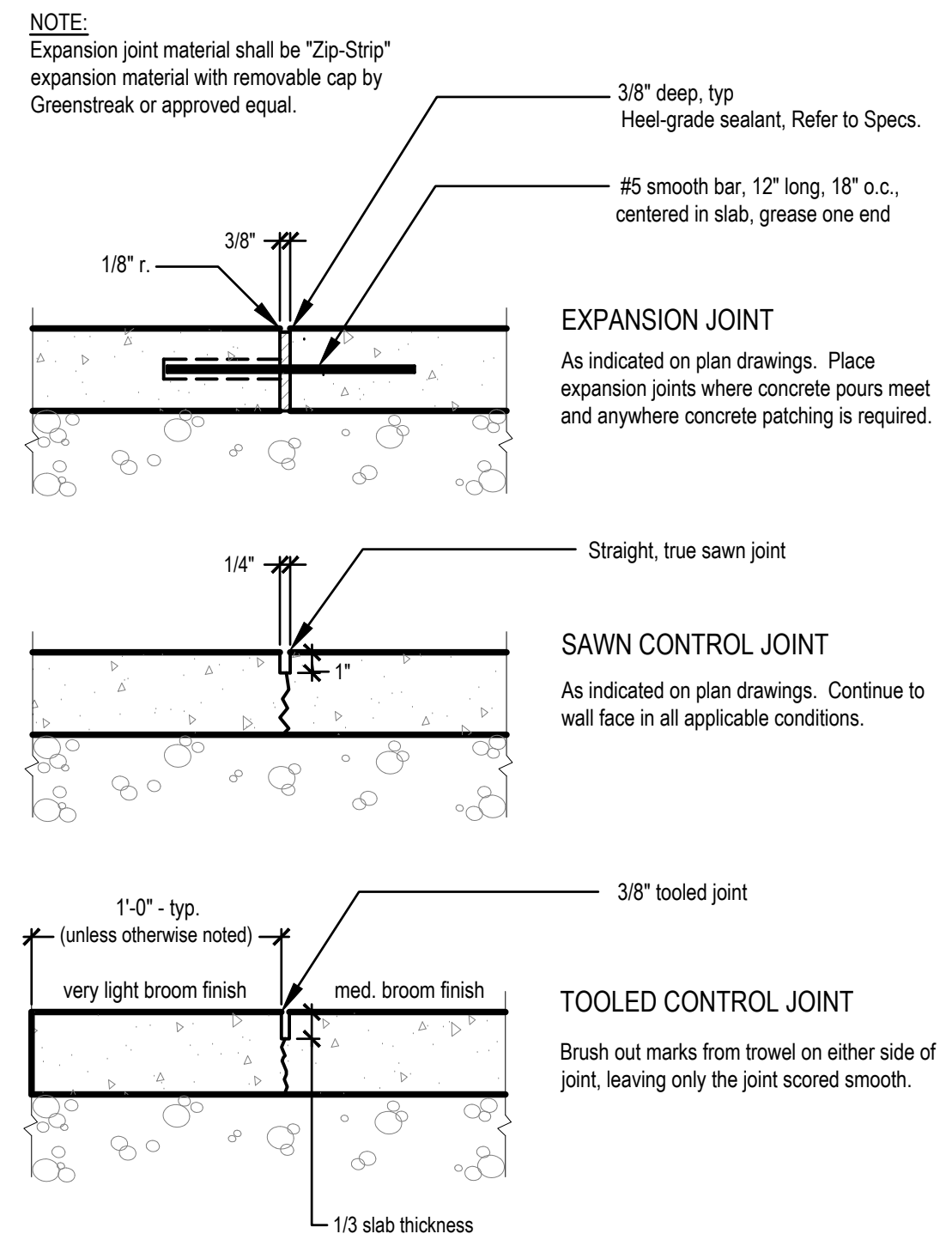
These Drawings and Specifications, and all copies thereof are and shall remain the property and copyright of the Landscape Architect. They shall be used only with respect to this Project and are not to be used on any other Project or Work without prior written permission from the Landscape Architect.

Sheet No:
NHS-103

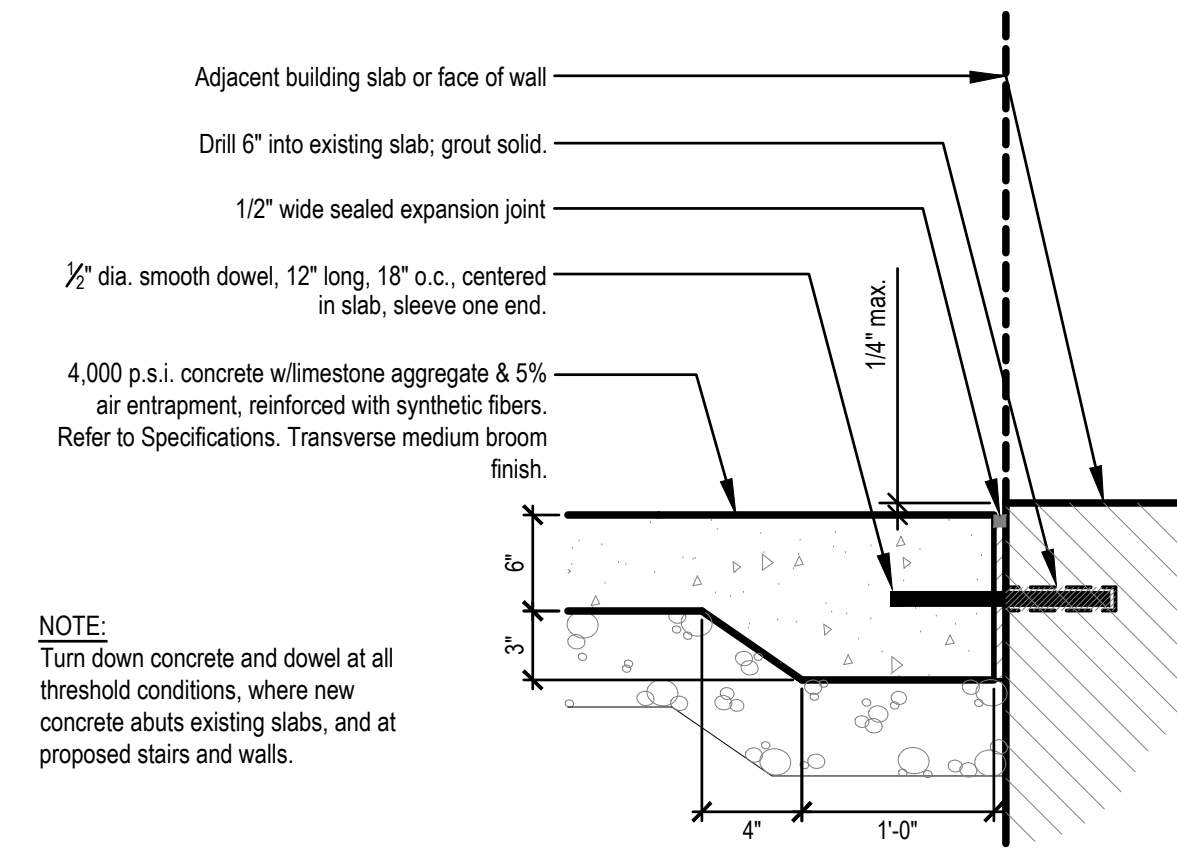


Revision	Date	Description
1	02-17-2025	Adendum #1

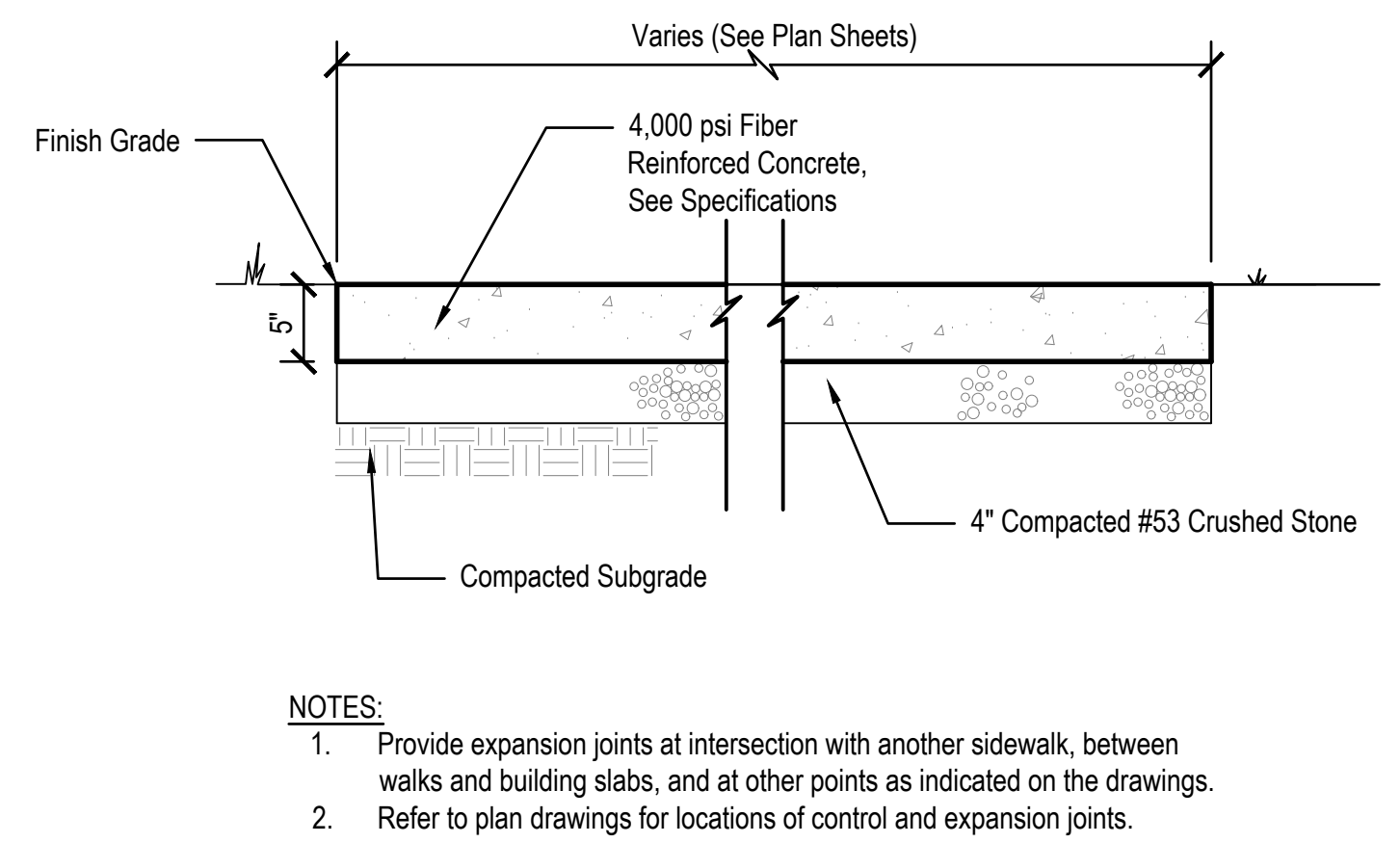
Date: 01/20/2025
Project No: 25-1867
Drawn by: SS/BH
Checked by: CCH/FJP



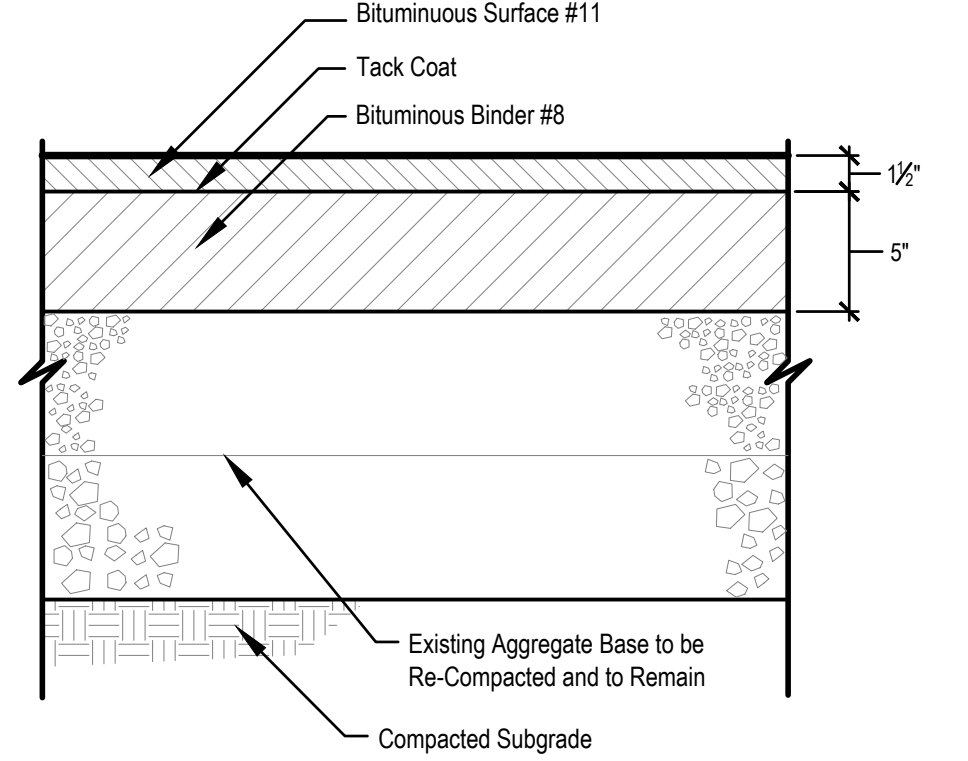
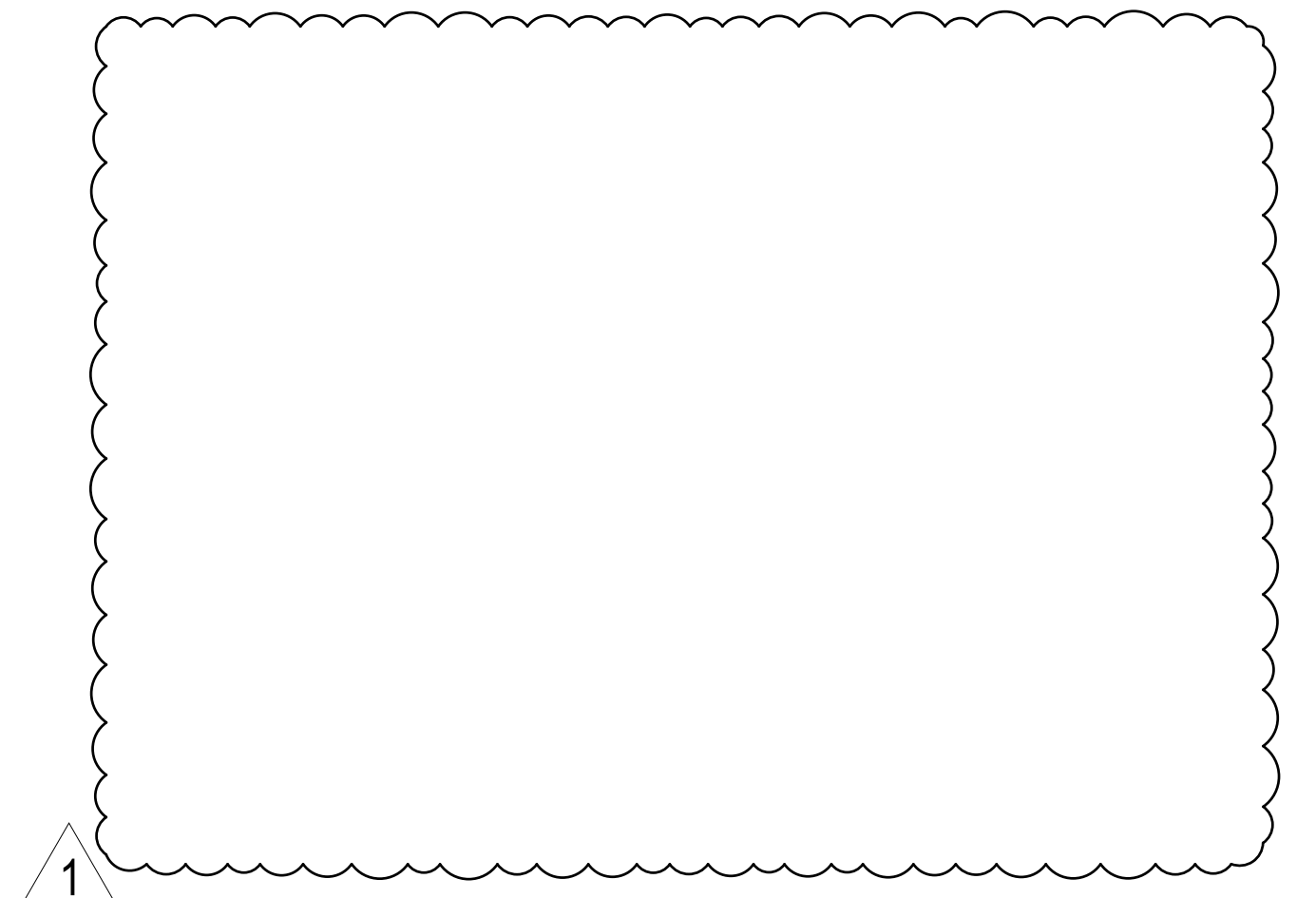
7 CONCRETE JOINTING
Not to Scale



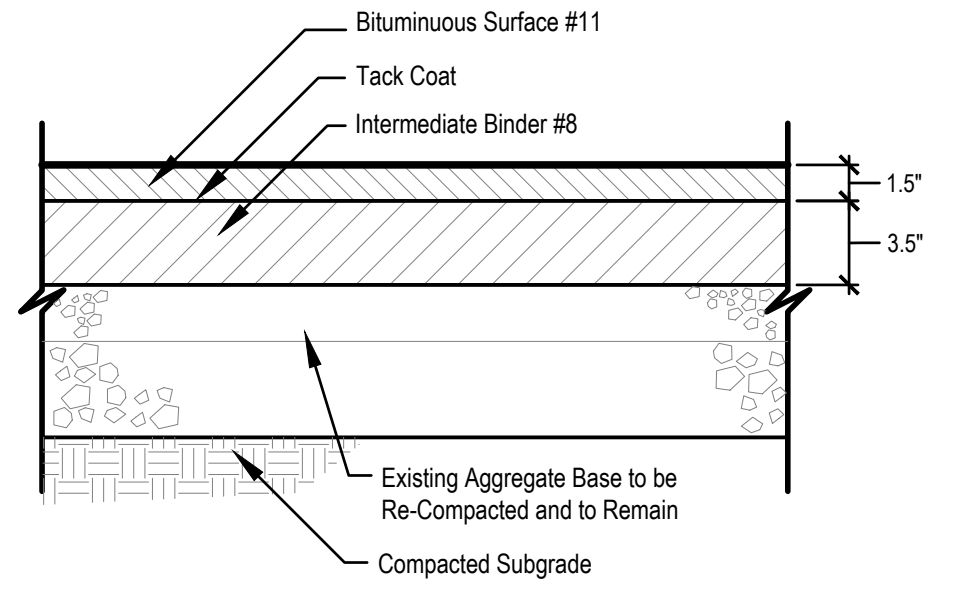
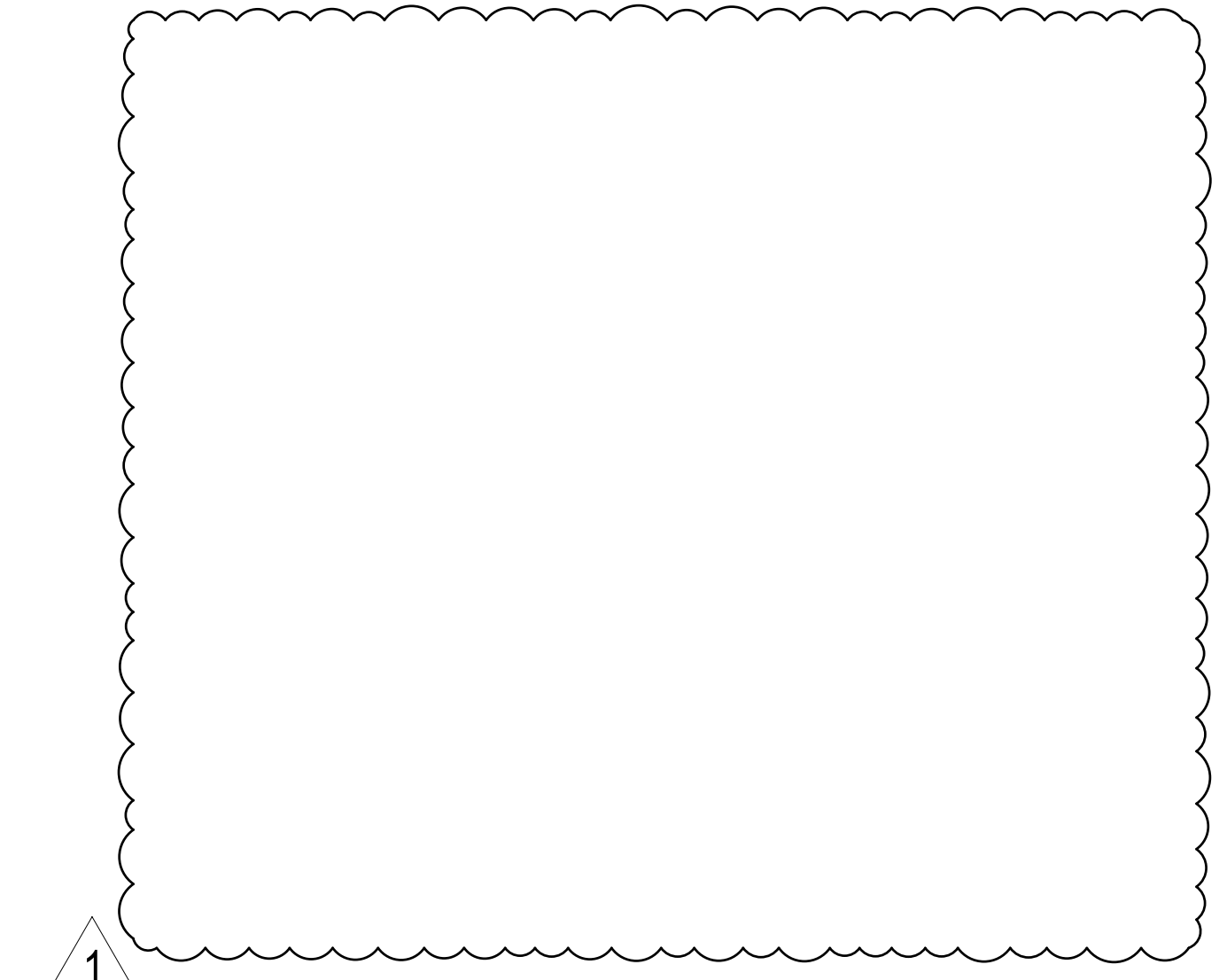
6 DOWELS IN CONCRETE @ THRESHOLD
Scale: 1"=1'-0"



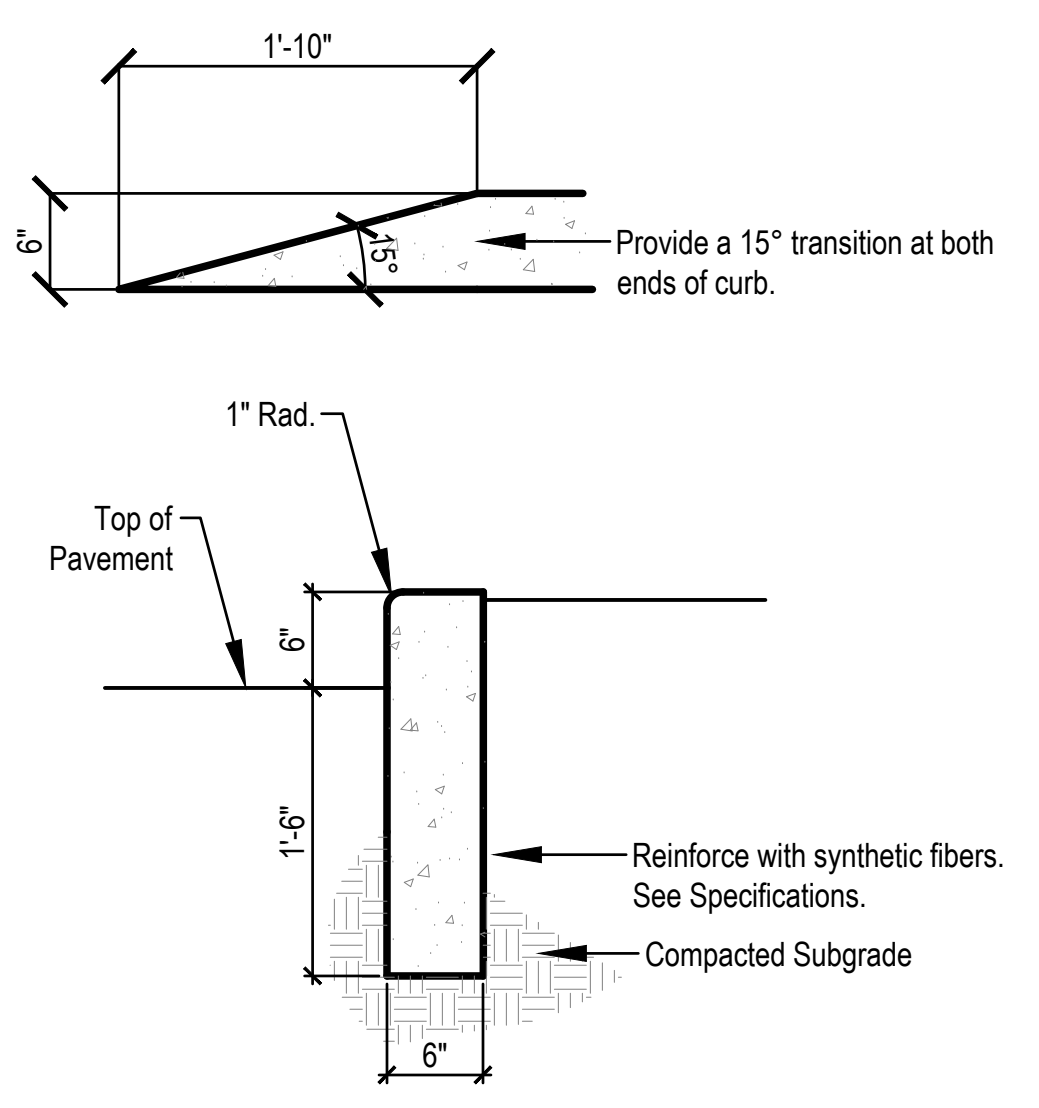
5 CONCRETE PAVEMENT
Not to scale



3 HEAVY DUTY ASPHALT OVER EXISTING STONE BASE
Not to Scale



1 ASPHALT PAVEMENT OVER EXISTING STONE BASE
Not to Scale



8 CONCRETE POST CURB
Scale: 1"=1'-0"