

WAYCROSS DRIVE - LOCAL, SUBURBAN / URBAN

REFERENCE KEYNOTES	
KEY	DESCRIPTION / REFERENCE
E	MEP OR LIGHTING FEATURE REFER TO ELECTRICAL OR LIGHTING SERIES
L	LANDSCAPE OR PLANTED AREA REFER TO SHEET L400
U	UTILITY FEATURE REFER TO CIVIL SERIES

C-CURBS AND RAMPS	
KEY	DESCRIPTION
C01	CONCRETE POST CURB REFER TO DETAIL 5/L600
C02	INTEGRAL CURB AND WALK REFER TO DETAIL 4/L600
C03	WHEEL STOP REFER TO DETAIL 15/L600
C04	CURB RAMP, STRAIGHT REFER TO DETAIL 4/L601
C05	CURB RAMP, DOUBLE WING REFER TO DETAIL 2/L601
C06	CURB RAMP, PARALLEL REFER TO DETAIL 1/L601
C07	CURB AND GUTTER, REFER TO DETAIL 5/L601
C08	TRUNCATED DOMES, REFER TO DETAIL 3/L601
C09	RAMP AND WALL, REFER TO DETAIL 9/L601

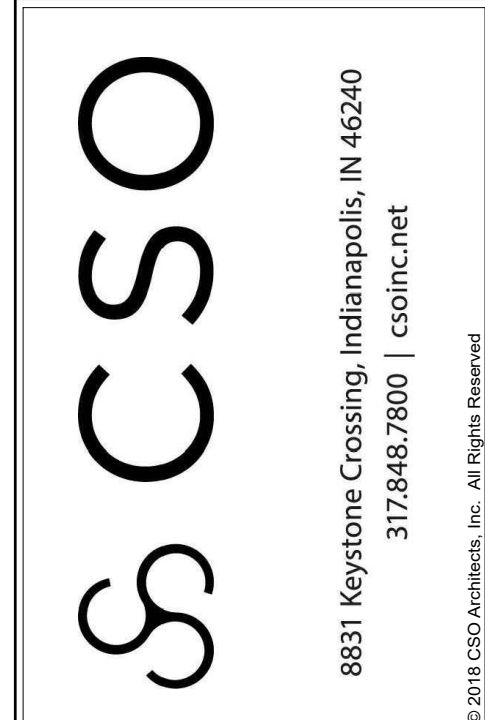
P-PAVEMENT	
KEY	DESCRIPTION
P01	ASPHALT, HEAVY DUTY REFER TO DETAIL 7/L600 AND SPECIFICATIONS 32 12 16
P02	ASPHALT, STANDARD REFER TO DETAIL 6/L600 AND SPECIFICATIONS 32 12 16
P03	ASPHALT, HEAVY DUTY FULL DEPTH REPLACEMENT REFER TO DETAIL 7/L600 AND SPEC 32 12 16
P04	ASPHALT, STANDARD MILL AND RESURFACE REFER TO DETAIL 9/L600 AND SPEC 32 12 16
P05	ASPHALT, STANDARD FULL DEPTH REPLACEMENT, REFER TO DETAIL 6/L600 REFER TO SPECIFICATIONS 32 12 16
P06	STANDARD CONCRETE REFER TO DETAIL 1,2,3/L600 AND SPECIFICATIONS 32 13 16
P07	DECORATIVE COURTYARD AGGREGATE; STONE TYPE A, NORTHERN LIGHTS, REFER TO SPECIFICATIONS 32 11 23
P08	DECORATIVE COURTYARD AGGREGATE; STONE TYPE B, PEA GRAVEL, REFER TO SPECIFICATIONS 32 11 23
P09	DECORATIVE COURTYARD AGGREGATE; STONE TYPE C, EBONY BLEND, REFER TO SPECIFICATIONS 32 11 23

G-FENCES AND GATES, REFER TO SPECIFICATIONS 32 31 13	
KEY	DESCRIPTION
G01	BARRIER SWING GATE, 38' W
G02	BARRIER SWING GATE, 32' W
G03	BARRIER SWING GATE, 28' W
G04	6'-0" H. ORNAMENTAL FENCE
G05	DOUBLE LEAD SWING GATE, 6'-0" OPENING, MATCH HEIGHT OF ADJACENT FENCING

SIGNAGE (COMPLY WITH MUTCD STANDARDS) (VIF REGULATORY SIGNS WITH CITY REPRESENTATIVE)	
KEY	DESCRIPTION / REFERENCE
S01	BUS LOT EVENT PARKING ONLY, REFER TO DETAIL 13/L600
S02	DO NOT ENTER, REFER TO DETAIL 13/L600
S03	VAN ACCESSIBLE ADA PARKING, REFER TO DETAIL 11/L600
S04	ACCESSIBLE ADA PARKING, REFER TO DETAIL 11/L600
S05	STOP, REFER TO DETAIL 13/L600

F-SITE FURNISHINGS	
KEY	DESCRIPTION
F01	FLAGPOLE, REFER TO DETAIL 14/L600 AND SPECIFICATIONS
F02	BOLLARD, REFER TO DETAIL 8/L601
F03	TABLE AND BENCHES, BASIS OF DESIGN MLTB1050 AND MLB1050B, MAGLIN, REFER TO SPECIFICATIONS

M-STRIPING	
KEY	DESCRIPTION
M01	STRIPING, WHITE
M02	STRIPING, YELLOW
M03	STRIPING, ADA, BLUE
M04	ADA PARKING SYMBOL, BLUE, REFER TO DETAIL 11/L600



PROJECT:  
**BARTHOLOMEW CONSOLIDATED SCHOOL CORPORATION RENOVATIONS TO L. FRANCES SMITH ELEMENTARY**  
 4505 WAYCROSS DRIVE, COLUMBUS, IN 47203

SCOPE DRAWINGS:  
 These drawings indicate the general scope of the project in terms of architectural design concept, the arrangement of structural, mechanical and electrical systems. The drawings do not necessarily indicate or describe all work required for the performance and completion of the project. On the part of the general contractor or subcontractor, the contractor shall furnish all items required for the proper installation and completion of the work.

REVISIONS:	
△	Addendum 03 03/10/2024

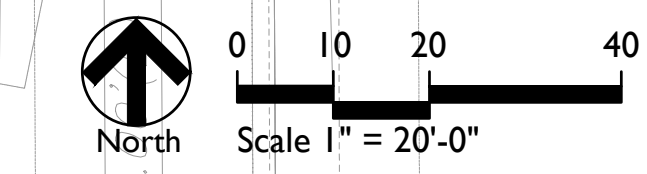
ISSUE DATE	DRAWN BY	CHECKED BY
01/15/2025	MA / DC	LM

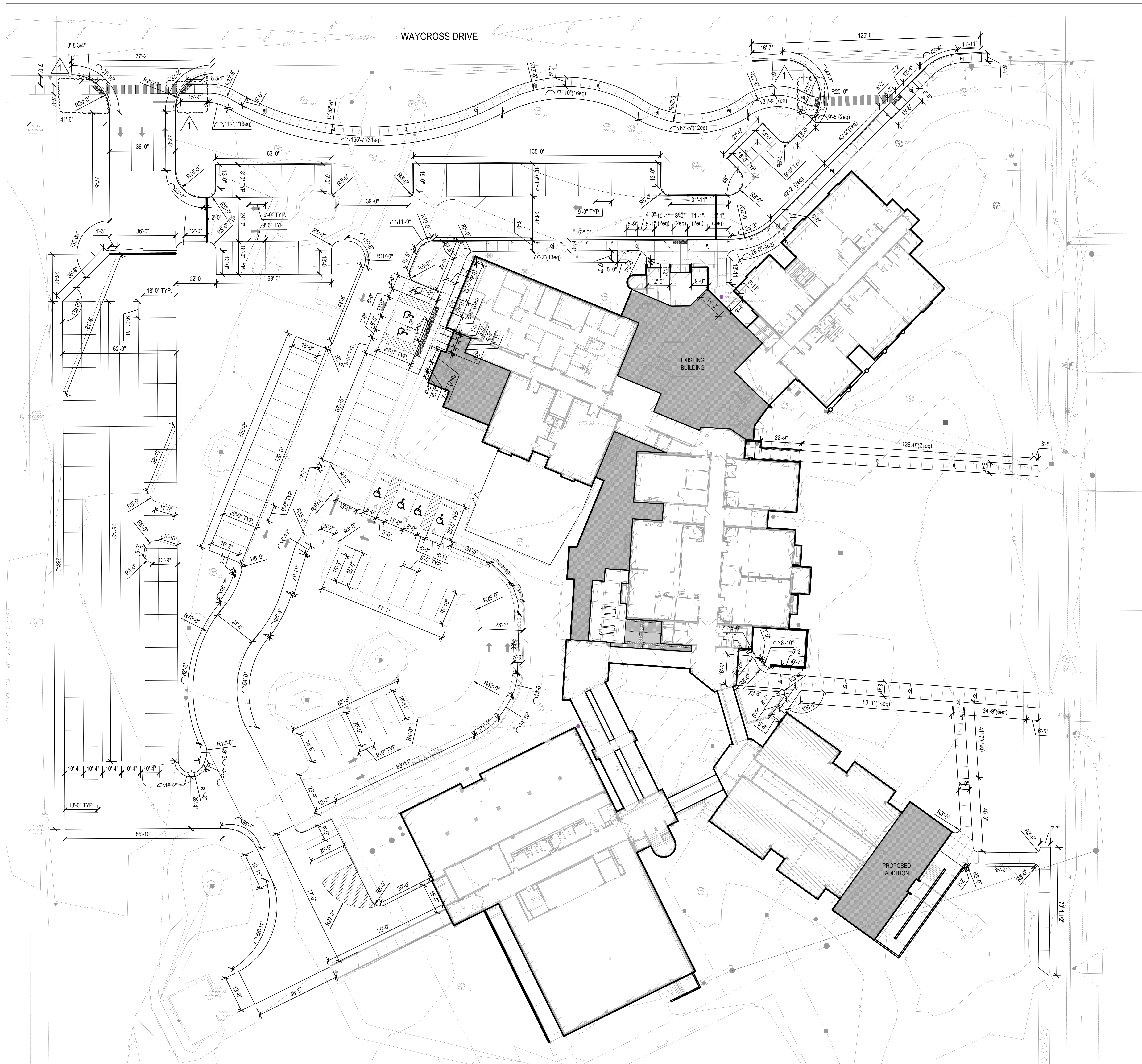
DRAWING TITLE:  
**SITE MATERIALS PLAN  
 BASE BID**



DRAWING NUMBER  
**L100**

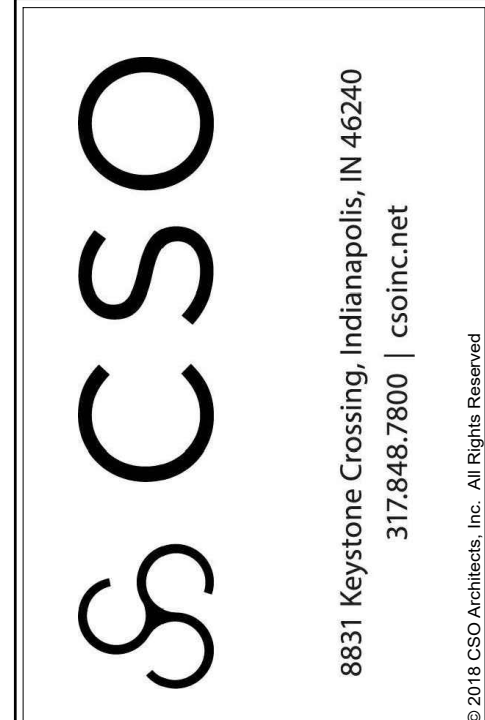
PROJECT NUMBER  
**2021049**





**LAYOUT NOTES**

1. Dimensions are shown to Face of Curb unless otherwise noted.
2. Contractor shall coordinate final joint locations in the field with the Landscape Architect. Align to existing conditions when practical, including at building and wall corners, connections to existing work, and to centerlines of doors.
3. Space control joints evenly between all bands and expansion joints as shown, unless otherwise dimensioned. Space interim joints equally whenever possible.
4. Digital AutoCAD files will be provided to the successful bidder as a courtesy to assist with field layout. The Contractor maintains all responsibility for the use, accuracy, and confirmation of such data.
5. All pavement striping shown shall adhere to Specifications. The Contractor shall include in their bid any miscellaneous copy, striping, or curb painting that may be requested by the Fire Marshal.
6. All disturbed areas not proposed to receive pavements shall be dressed with topsoil and seeded per Specifications.
7. Contractor shall provide and install One (1) Accessible Parking Sign per accessible parking space indicated in plans. Coordinate final location in the field with Landscape Architect.



PROJECT:  
**BARTHOLOMEW CONSOLIDATED SCHOOL CORPORATION RENOVATIONS TO L. FRANCES SMITH ELEMENTARY**  
 4505 WAYCROSS DRIVE, COLUMBUS, IN 47203

SCOPE DRAWINGS:  
 These drawings indicate the general scope of the project in terms of architectural design control, the arrangement of structural, mechanical and electrical systems. The drawings do not necessarily indicate or describe all work required for the performance and completion of the work. On the basis of the general scope indicated or described, the contractor shall furnish all items required for the proper execution and completion of the work.

REVISIONS:

△	Addendum 03	03/10/2024
---	-------------	------------

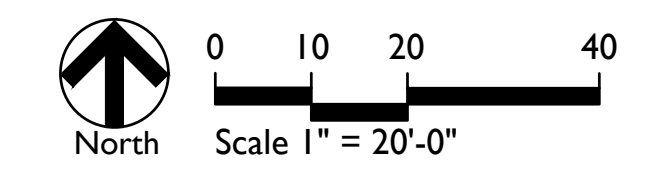
ISSUE DATE	DRAWN BY	CHECKED BY
01/15/2025	MA/DC	LM

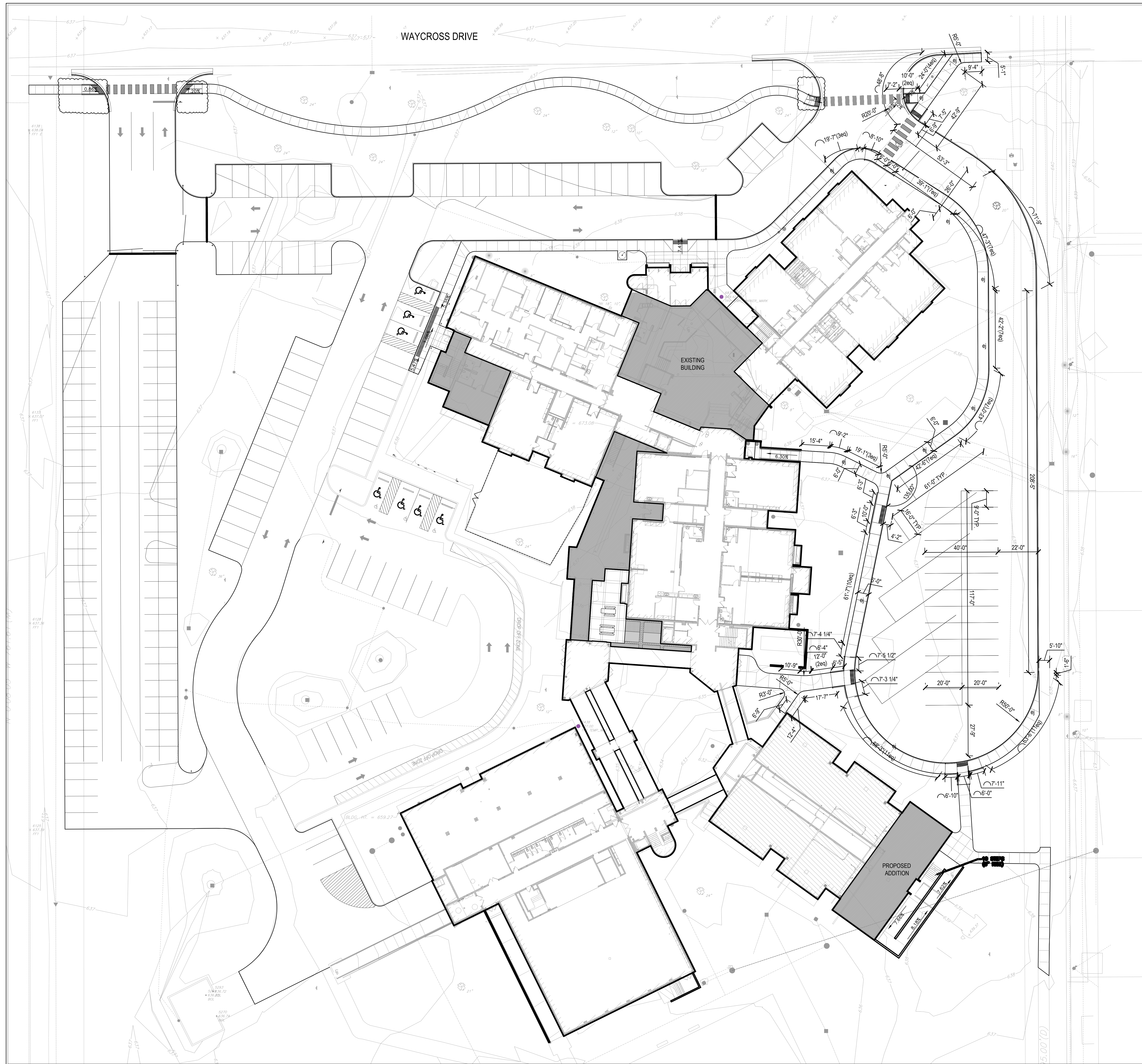
DRAWING TITLE:  
**SITE LAYOUT PLANS**



DRAWING NUMBER:  
**L200**

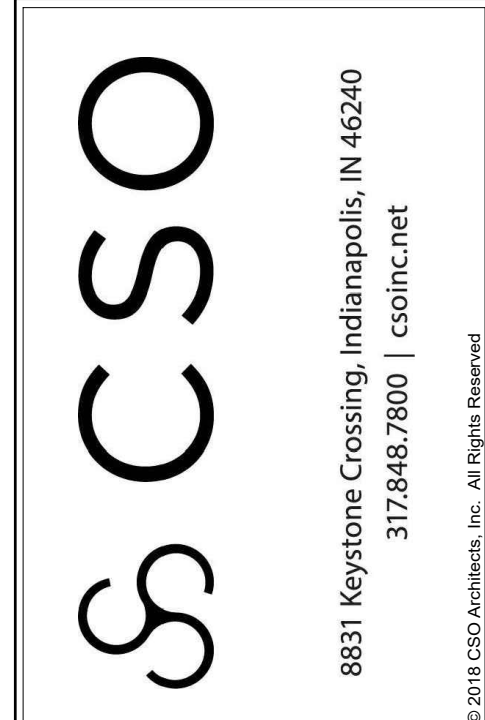
PROJECT NUMBER:  
**2021049**





**LAYOUT NOTES**

1. Dimensions are shown to Face of Curb unless otherwise noted.
2. Contractor shall coordinate final joint locations in the field with the Landscape Architect. Align to existing conditions when practical, including at building and wall corners, connections to existing work, and to centerlines of doors.
3. Space control joints evenly between all bands and expansion joints as shown, unless otherwise dimensioned. Space interim joints equally whenever possible.
4. Digital AutoCAD files will be provided to the successful bidder as a courtesy to assist with field layout. The Contractor maintains all responsibility for the use, accuracy, and confirmation of such data.
5. All pavement striping shown shall adhere to Specifications. The Contractor shall include in their bid any miscellaneous copy, striping, or curb painting that may be requested by the Fire Marshal.
6. All disturbed areas not proposed to receive pavements shall be dressed with topsoil and seeded per Specifications.
7. Contractor shall provide and install One (1) Accessible Parking Sign per accessible parking space indicated in plans. Coordinate final location in the field with Landscape Architect.



PROJECT:  
**BARTHELOMEW CONSOLIDATED SCHOOL CORPORATION RENOVATIONS TO L. FRANCES SMITH ELEMENTARY**  
 4505 WAYCROSS DRIVE, COLUMBUS, IN 47203

**SCOPE DRAWINGS:**  
 These drawings indicate the general scope of the project in terms of architectural design control, the arrangement of structural, mechanical and electrical systems. The drawings do not necessarily indicate or describe all work required for the performance and completion of the project. On the basis of the general scope indicated on these drawings, the contractor shall furnish all items required for the proper execution and completion of the work.

**REVISIONS:**

△	Addendum 03	03/10/2024
---	-------------	------------

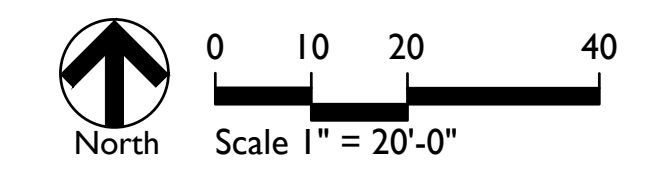
ISSUE DATE	DRAWN BY	CHECKED BY
01/15/2025	MA / DC	LM

DRAWING TITLE:  
**SITE LAYOUT PLANS ALTERNATE**



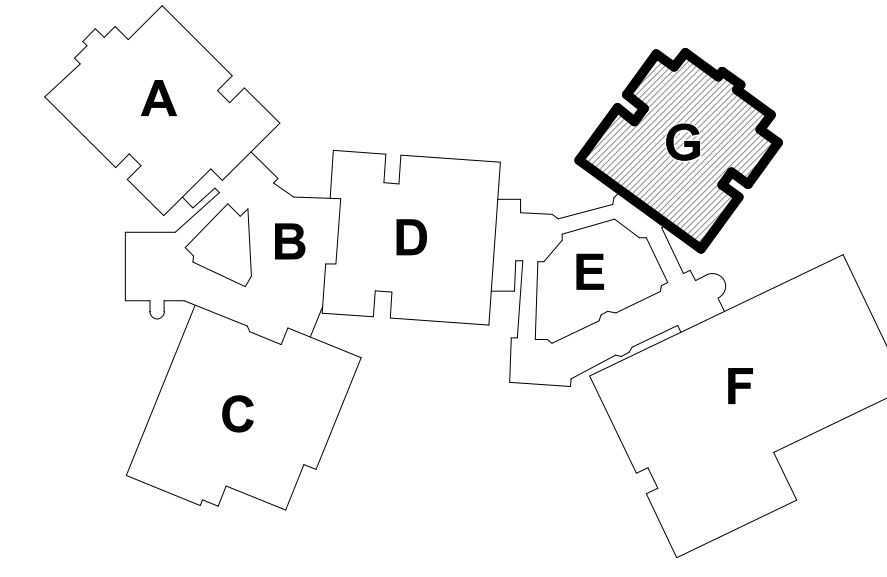
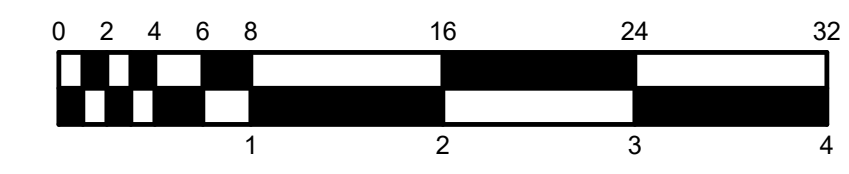
DRAWING NUMBER  
**L200a**

PROJECT NUMBER  
**2021049**





**SECOND LEVEL - UNIT G - PLUMBING**  
 SCALE: 1/8" = 1'-0"  
 NORTH



KEY PLAN  
 NORTH

- RENOVATION LEGEND:**
- WORK TO BE INSTALLED
  - WORK TO REMAIN
- GENERAL NOTES:**
1. REFER TO SHEET PM001 FOR ADDITIONAL GENERAL NOTES.
- PLAN NOTES:**
1. 4" ROOF CONDUCTOR DOWN.
  2. 1 1/4" COLD WATER, 3/4" HOT WATER, 1 1/2" WASTE DOWN, 1 1/2" VENT UP.
  3. 4" WASTE DOWN, 2" VENT UP.
  4. CONNECT TO EXISTING VENT THROUGH ROOF.
  5. 1/2" HOT AND COLD WATER DOWN.



**CSO**  
 8831 Keystone Crossing, Indianapolis, IN 46240  
 317.847.7800 | CSO@csoclient.com  
 © 2018 CSO Architects, Inc. All Rights Reserved.

DA # 24061  
**R.E. Dimond**  
 and Associates, Inc.  
 Consulting Engineers  
 722 North Capitol Avenue  
 Indianapolis, IN 46202  
 Phone: (317) 634-4672  
 Fax: (317) 634-9725

PROJECT:  
**BARTHOLOMEW CONSOLIDATED  
 SCHOOL CORPORATIONS TO  
 RENOVATIONS TO  
 L. FRANCES SMITH ELEMENTARY**  
 4505 WAYCROSS DRIVE, COLUMBUS, IN 47201

**SCOPE DRAWINGS:**  
 These drawings indicate the general scope of the project. The contractor shall verify the accuracy of all dimensions and conditions shown on these drawings. The contractor shall be responsible for obtaining all necessary permits and approvals. On the basis of the general scope indicated on these drawings, the contractor shall furnish all items required for the proper execution and completion of the work.

**REVISIONS:**

NO.	DESCRIPTION	DATE
2	ADDENDUM #02	02/05/25
3	ADDENDUM #03	02/10/25

ISSUE DATE	DRAWN BY	CHECKED BY
01/15/25	MLB	GAC

DRAWING TITLE:  
**SECOND LEVEL  
 - UNIT G -  
 PLUMBING**



DRAWING NUMBER  
**P202G**

PROJECT NUMBER  
**2024023**

FIXTURE ROUGH-IN SCHEDULE & MOUNTING HEIGHTS							
MARK NO.	FIXTURE DESCRIPTION	CW	HW	TRAP	W	V	MOUNTING HEIGHTS
WC-2	WATER CLOSET - WALL HUNG, ADA (STAFF)	1"	-	INTEGRAL	4"	2"	17" TO SEAT
WC-3	WATER CLOSET - WALL MOUNTED CHILD HEIGHT, ADA	1"	-	INTEGRAL	4"	2"	15" TO SEAT
L-1	LAVATORY - WALL HUNG CHILD HEIGHT (KINDERGARTEN)	1/2"	1/2"	1-1/2"	1-1/2"	1-1/2"	27" TO RIM
L-2	LAVATORY - WALL HUNG, ADA (STAFF)	1/2"	1/2"	1-1/2"	1-1/2"	1-1/2"	34" TO RIM
L-3	LAVATORY - WALL HUNG (ART AND MUSIC)	1/2"	1/2"	1-1/2"	1-1/2"	1-1/2"	30" TO RIM
SK-1	CLASSROOM SINK, ADA 19"x24"	1/2"	1/2"	1-1/2"	1-1/2"	1-1/2"	MOUNT IN COUNTERTOP
SK-2	TWO COMPARTMENT SINK	1/2"	1/2"	1-1/2"	1-1/2"	1-1/2"	-
SK-3	CLINIC SINK	1/2"	1/2"	1-1/2"	1-1/2"	1-1/2"	MOUNT IN COUNTERTOP
SK-4	SINK (EXAM ROOM)	1/2"	1/2"	1-1/2"	1-1/2"	1-1/2"	MOUNT IN COUNTERTOP
EWC-1	WATER COOLER WITH BOTTLE FILLER, ADA (SINGLE)	1/2"	-	1-1/2"	1-1/2"	1-1/2"	30" TO BUBBLER
EWC-2	WATER COOLER WALL HUNG, ADA (SIDE-BY-SIDE)	1/2"	-	1-1/2"	1-1/2"	1-1/2"	36" TO LOW BUBBLER 42" TO HIGH BUBBLER
SH-1	SHOWER ADA	1/2"	1/2"	FD	-	-	SHOWER VALVE 42" TO CENTERLINE OF VALVE

PLUMBING EQUIPMENT SCHEDULE								
MARK NO.	SPECIFICATION NAME	MANUFACTURER & MODEL NO.	ELECTRICAL DATA			GAS LOAD (BTU)	CAPACITY	REMARKS
			LOAD	VOLTS	PHASE			
WH-A	ELECTRIC WATER HEATER	LOCHINVAR #LTA052HD	4.5 KW	208	1 PH	-	27 GPH @ 100'Δt	-
CP-A	CIRCULATION PUMP	TACO #0011-F4	1/8	115	1 PH	-	1.5 GPM @ 25' TDH	AQUASTAT SET POINTS ON: 110°F OFF: 117°F
ET-1	EXPANSION TANK	THERM-X-TROL #ST-12-C	-	-	-	-	TANK VOLUME = 6.4 GALLONS	-

WATER HAMMER ARRESTER SCHEDULE						
TYPE	I.P.S.	F.U. RATING	J.R. SMITH NO.	WADE NO.	ZURN NO.	REMARKS
A	3/4"	1 - 11	5005	W-5	100	P.D.I. CERTIFIED
B	1"	12 - 32	5010	W-10	200	P.D.I. CERTIFIED
C	1"	33 - 60	5020	W-20	300	P.D.I. CERTIFIED
D	1"	61 - 113	5030	W-50	400	P.D.I. CERTIFIED

SCOPE DRAWINGS:  
These drawings indicate the general scope of the project in terms of mechanical design concept, the structure of mechanical, electrical and electrical systems.  
The drawings do not necessarily indicate or describe all work required for the performance and completion of the project.  
On the basis of the general scope indicated on drawings, the trade contractors shall furnish all items required for the proper execution and completion of the work.

REVISIONS:  
2 ADDENDUM #02 02/05/25  
3 ADDENDUM #03 02/10/25

ISSUE DATE	DRAWN BY	CHECKED BY
01/15/25	MLB	GAC

DRAWING TITLE:  
**SCHEDULES - PLUMBING**

CERTIFIED BY:  
  
Joseph C. Becke  
01/15/2025

DRAWING NUMBER  
**P601**

PROJECT NUMBER  
**2024023**