

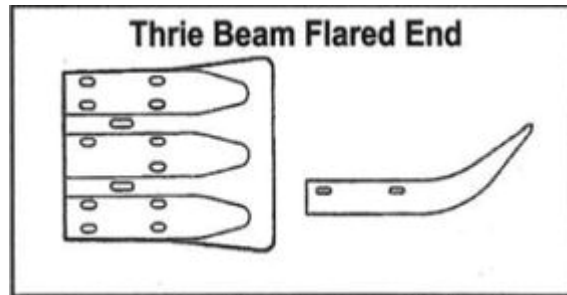
**Morgan County Bridge 99 Overlay**

**(Letting February 3, 2025)**

**Pre-bid Contractor questions received on or before 1/27/2025:**

**Q:** Regarding item 17 thrie beam terminal connector, 4 each. It appears the intent is to connect the thrie beam rail element of the TS-1 railing to the existing concrete wing walls. This will not work, as the thrie beam will not align with the front face of the wing wall.

**A:** **Item 17 has been revised to “Thrie-Beam Flared End” as shown below which shall be installed on the ends of the TS-1 Railing at each corner of the bridge.**



**Q:** What is the size, length, and grade of the anchor bolts?

**A:** **The Steel Bridge Railing components shall be in accordance with ISS 910.20.**

**Q:** What is the depth required for the anchor bolts?

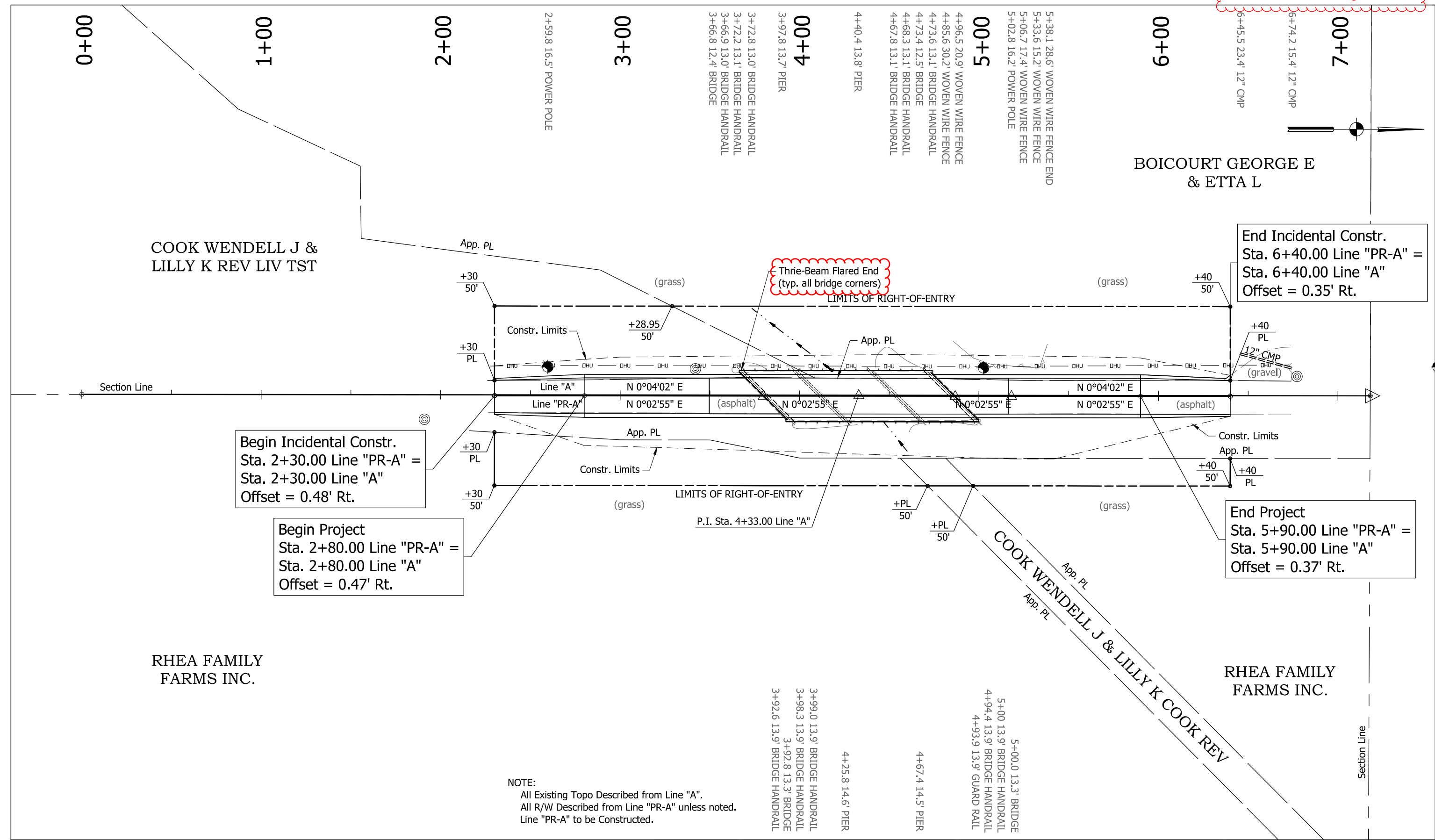
**A:** **The anchor bolts shall be set 12” deep and anchored in place using a chemical anchor system in accordance with INDOT’s approved list of Qualified Products and Sources.**

**ITEMIZED PROPOSAL**  
**MORGAN COUNTY BRIDGE NO. 99 RIGID DECK OVERLAY**  
**MORGAN COUNTY, INDIANA**  
 February 3, 2025

ITEM No.	DESCRIPTION	UNIT	QUANTITY	UNIT PRICE	EXTENSION
1	CONSTRUCTION ENGINEERING	LS	1.0		
2	MOBILIZATION AND DEMOBILIZATION	LS	1.0		
3	CLEARING RIGHT-OF-WAY	LS	1.0		
4	BRIDGE RAILING, REMOVE	LFT	214.0		
5	EXCAVATION, COMMON	CYS	114.0		
6	STORMWATER MANAGEMENT BUDGET	DOL	5000.0		
7	STORMWATER MANAGEMENT IMPLEMENTATION	LS	1.0		
8	SUBGRADE TREATMENT, TYPE II	SYS	469.0		
9	GEOTEXTILE FOR PAVEMENT TYPE 2B	SYS	136.0		
10	COMPACTED AGGREGATE NO. 53	CYS	53.0		
11	SUBBASE FOR PCCP	CYS	34.0		
12	COMPACTED AGGREGATE NO. 53	TON	54.0		
13	MILLING TRANSITION	SYS	214.0		
14	QC/QA-HMA, 3, 64, SURFACE, 9.5 MM	TON	45.0		
15	QC/QA-HMA, 3, 64, INTERMEDIATE, 19.0 MM	TON	44.0		
16	ASPHALT FOR TACK COAT	TON	1.0		
17	THRIE-BEAM FLARED END	EACH	4.0		
18	REINFORCED CONCRETE BRIDGE APPROACH, 10 IN.	SYS	136.0		
19	RIPRAP, REVETMENT	TON	88.0		
20	CLEAN AND EPOXY COAT EXISTING PILES	LS	1.0		
21	FIELD DRILLED HOLE IN CONCRETE	EACH	92.0		
22	REINFORCING BARS, EPOXY COATED	LBS	7622.0		
23	THREADED TIE BAR ASSEMBLY, EPOXY COATED	EACH	22.0		
24	RAILING, STEEL TS-1	LFT	212.5		
25	PNEUMATICALLY PLACED MORTAR	SFT	748.0		
26	HYDRODEMOLITION	SYS	333.0		
27	BRIDGE DECK OVERLAY, BUDGET	DOL	9300.0		
28	BRIDGE DECK, REMOVE EXISTING CONCRETE SURFACE	SYS	333.0		
29	LONGITUDINAL GROOVING	SYS	438.0		
30	BRIDGE DECK PATCHING, FULL DEPTH	SFT	300.0		
31	BRIDGE DECK OVERLAY, LATEX MODIFIED	SYS	333.0		
32	ROAD CLOSURE SIGN ASSEMBLY	EACH	4.0		
33	CONSTRUCTION SIGN, B	EACH	8.0		
34	MAINTAINING TRAFFIC	LS	1.0		
35	LINE, THERMOPLASTIC, SOLID, WHITE, 4 IN.	LFT	820.0		
36	LINE, THERMOPLASTIC, SOLID, YELLOW, 4 IN.	LFT	820.0		

**TOTAL BID:**

SUBMITTED BY: \_\_\_\_\_  
 SIGNATURE: \_\_\_\_\_  
 TITLE: \_\_\_\_\_  
 ADDRESS: \_\_\_\_\_



Begin Incidental Constr.  
Sta. 2+30.00 Line "PR-A" =  
Sta. 2+30.00 Line "A"  
Offset = 0.48' Rt.

Begin Project  
Sta. 2+80.00 Line "PR-A" =  
Sta. 2+80.00 Line "A"  
Offset = 0.47' Rt.

End Incidental Constr.  
Sta. 6+40.00 Line "PR-A" =  
Sta. 6+40.00 Line "A"  
Offset = 0.35' Rt.

End Project  
Sta. 5+90.00 Line "PR-A" =  
Sta. 5+90.00 Line "A"  
Offset = 0.37' Rt.

NOTE:  
All Existing Topo Described from Line "A".  
All R/W Described from Line "PR-A" unless noted.  
Line "PR-A" to be Constructed.



8440 Allison Pointe Boulevard, Suite 200  
Indianapolis, IN 46250  
Phone 317-895-2585  
www.ucindy.com



RECOMMENDED FOR APPROVAL	<i>Chris Dyer</i>	1/28/2025
DESIGNED:	MAG	DRAWN: RSJ
CHECKED:	CJD	CHECKED: CJD

MORGAN COUNTY HIGHWAY DEPARTMENT  
**PLAN DETAILS**  
HERBEMONT ROAD OVER LAKE DITCH

HORIZONTAL SCALE	BRIDGE FILE
1" = 50'	MORGAN 99
VERTICAL SCALE	DESIGNATION
N/A	-
SURVEY BOOK	SHEETS
-	1 of 4
CONTRACT	PROJECT
-	MORGAN 99