

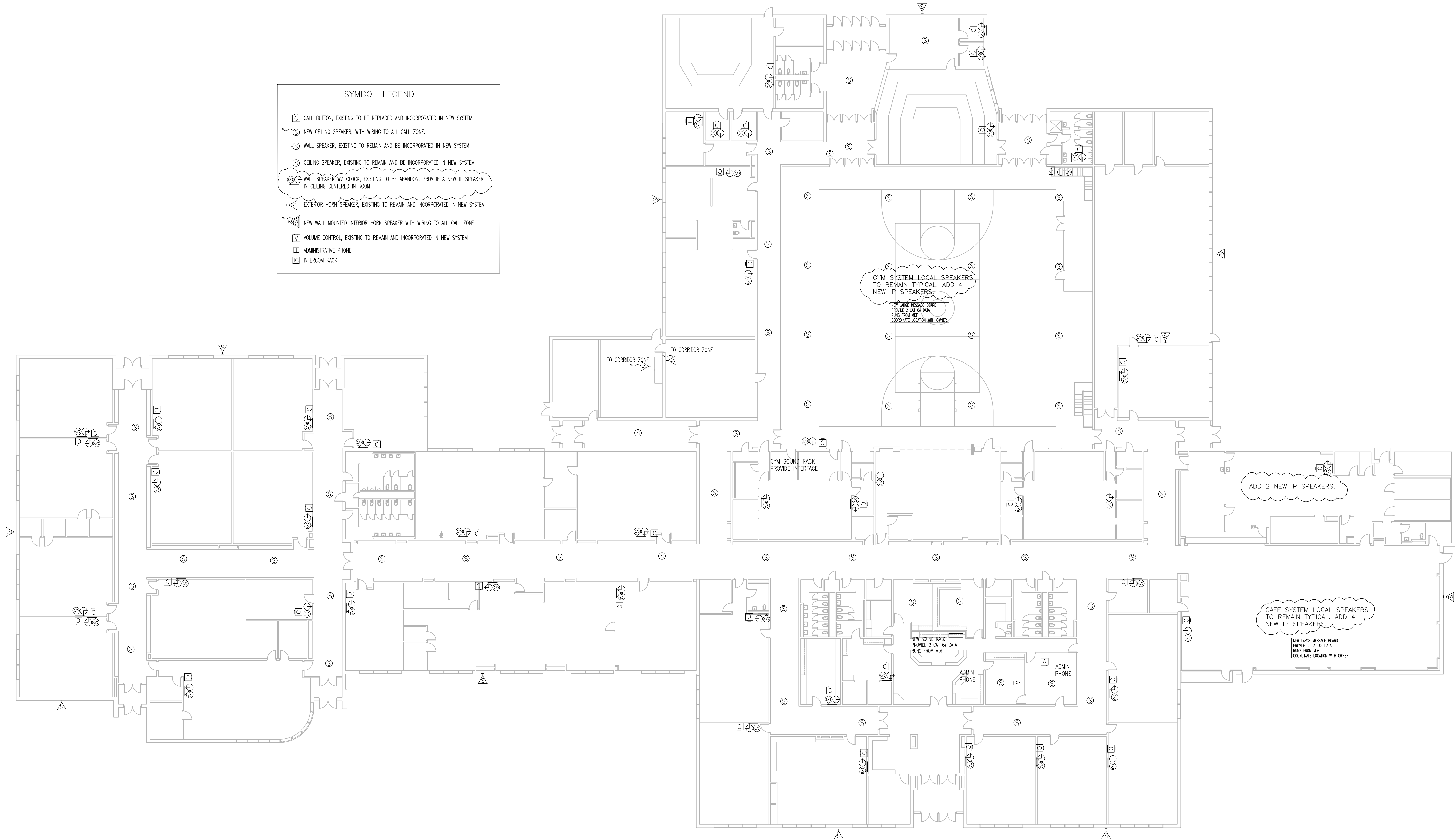
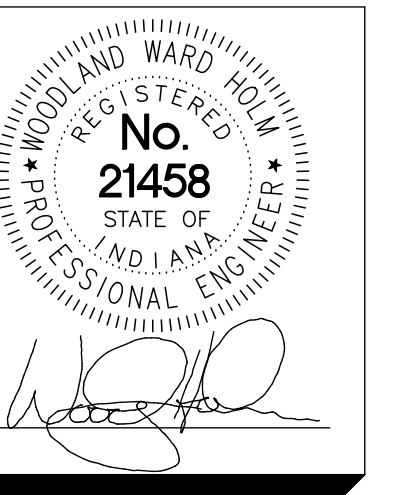
REVISIONS:


WAINWRIGHT MIDDLE SCHOOL PA REPLACEMENT PROJECT  
TIPPECANOE SCHOOL CORPORATION  
LAFAYETTE, INDIANA  
INTERCOM REPLACEMENT FLOOR PLAN

PROJECT NO.  
1452

DATE  
JANUARY 10, 2025

DRAWN BY: CHECKED BY:  
RDS WWH



SYMBOL LEGEND

☐	CALL BUTTON, EXISTING TO BE REPLACED AND INCORPORATED IN NEW SYSTEM.
⊙	NEW CEILING SPEAKER, WITH WIRING TO ALL CALL ZONE.
⊕	WALL SPEAKER, EXISTING TO REMAIN AND BE INCORPORATED IN NEW SYSTEM
⊖	CEILING SPEAKER, EXISTING TO REMAIN AND BE INCORPORATED IN NEW SYSTEM
⊗	WALL SPEAKER W/ CLOCK, EXISTING TO BE ABANDON. PROVIDE A NEW IP SPEAKER IN CEILING CENTERED IN ROOM.
⚠	EXTERIOR-HORN SPEAKER, EXISTING TO REMAIN AND INCORPORATED IN NEW SYSTEM
⚡	NEW WALL MOUNTED INTERIOR HORN SPEAKER WITH WIRING TO ALL CALL ZONE
⚙	VOLUME CONTROL, EXISTING TO REMAIN AND INCORPORATED IN NEW SYSTEM
☎	ADMINISTRATIVE PHONE
📡	INTERCOM RACK

WAINWRIGHT MIDDLE SCHOOL - INTERCOM SYSTEM FLOOR PLAN  
SCALE: 1/8" = 1'-0"

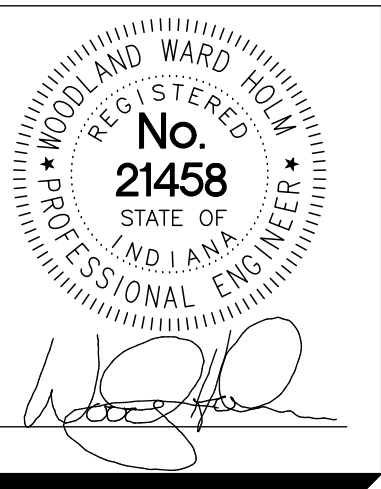
REVISIONS:

WYANDOTTE ELEMENTARY SCHOOL PA REPLACEMENT PROJECT  
 TIPECANOE SCHOOL CORPORATION  
 LAFAYETTE, INDIANA  
 INTERCOMREPLACEMENT FLOOR PLAN

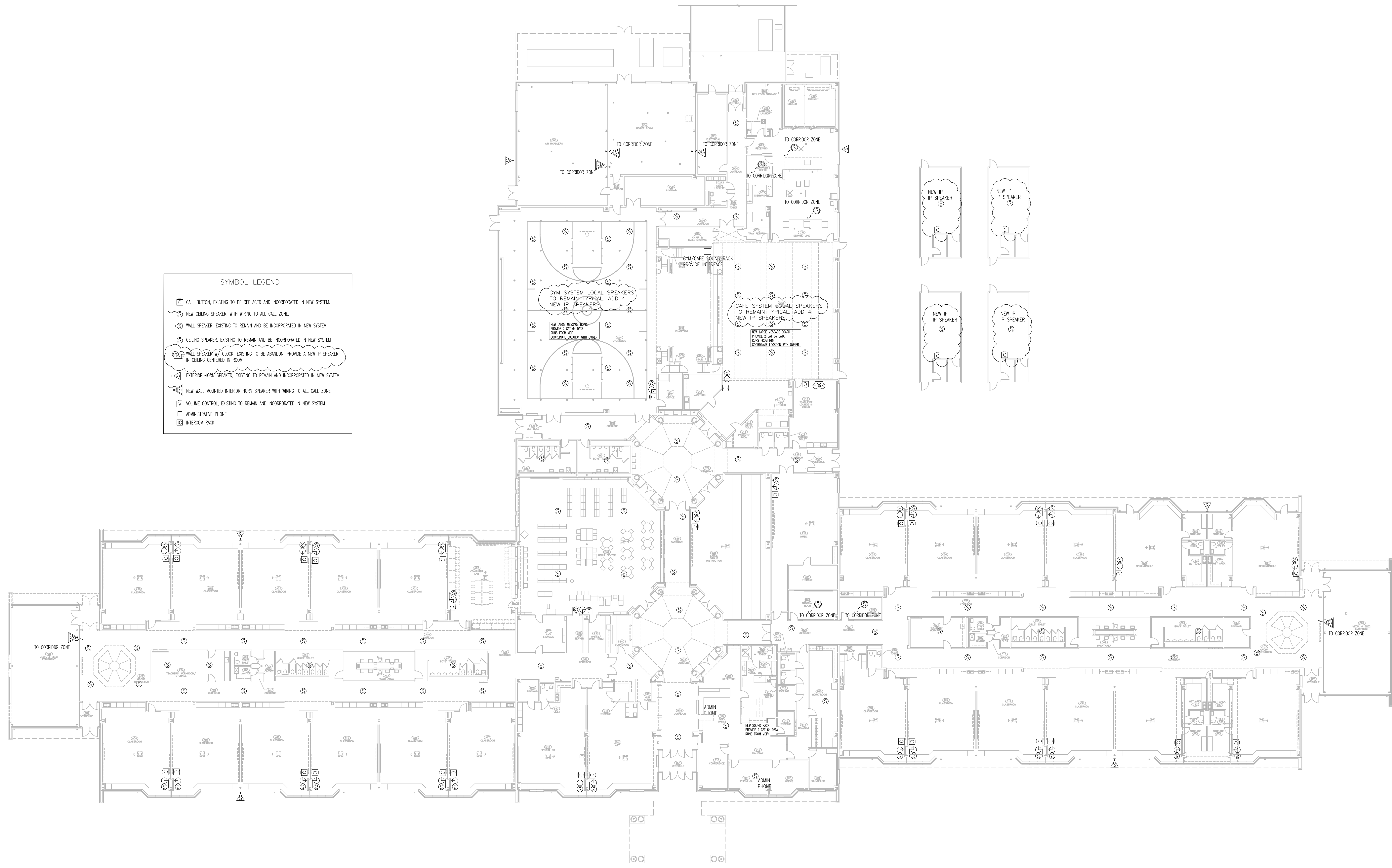
PROJECT NO.  
1452

DATE  
JANUARY 10, 2025

DRAWN BY: CHECKED BY:  
RDS WHH



SHEET NO.



SYMBOL LEGEND	
	CALL BUTTON, EXISTING TO BE REPLACED AND INCORPORATED IN NEW SYSTEM.
	NEW CEILING SPEAKER, WITH WIRING TO ALL CALL ZONE.
	WALL SPEAKER, EXISTING TO REMAIN AND BE INCORPORATED IN NEW SYSTEM.
	CEILING SPEAKER, EXISTING TO REMAIN AND BE INCORPORATED IN NEW SYSTEM.
	WALL SPEAKER W/ CLOCK, EXISTING TO BE ABANDON. PROVIDE A NEW IP SPEAKER IN CEILING CENTERED IN ROOM.
	EXTERIOR-HORN SPEAKER, EXISTING TO REMAIN AND INCORPORATED IN NEW SYSTEM.
	NEW WALL MOUNTED INTERIOR HORN SPEAKER WITH WIRING TO ALL CALL ZONE.
	VOLUME CONTROL, EXISTING TO REMAIN AND INCORPORATED IN NEW SYSTEM.
	ADMINISTRATIVE PHONE.
	INTERCOM RACK.

**WYANDOTTE ELEMENTARY SCHOOL - INTERCOM SYSTEM FLOOR PLAN**  
**SCALE: 1/16" = 1'-0"**