



---

**Sunman-Dearborn Community Schools  
BP#1 - Early Mechanical**

**ADDENDUM 1**  
**Additional SES Updated Drawings**  
**Date: 8/5/24**

MECHANICAL SYMBOL SCHEDULE					
PIPING SYMBOLS			MECHANICAL LINE TYPES		ABBREVIATIONS
	AUTOMATIC FLOW CONTROL VALVE		P&T RELIEF VALVE		ACCU AIR COOLED CONDENSING UNIT
	AIR SEPARATOR		P&T PORT		A.F.F. ABOVE FINISHED FLOOR
	AUTOMATIC AIR VENT		PIPE BREAK		AFMS AIR FLOW MEASURING STATION
	BALL VALVE		PIPE CAP		AHJ AIR HANDLER
	BUTTERFLY VALVE		PIPE DROP		AS AIR SEPARATOR
	CHECK VALVE		PIPE RISE		ADS AIR DIRT SEPARATOR
	DOUBLE CHECK BACKFLOW PREVENTER		PIPE THERMOMETER		B BOILER
	FLOW METER		PRESSURE GAUGE		CF CEILING FAN
	GAS OUTLET TURRET		PRESSURE INDEPENDENT CONTROL VALVE		CHLR CHILLER
	GAS COCK		PRESSURE REDUCING VALVE		CHWR CHILLED WATER RETURN
	GATE VALVE		PRESSURE REGULATING VALVE		CHWS CHILLED WATER SUPPLY
	GLOBE VALVE		STRAINER		CO2 CARBON DIOXIDE
	HOSE THREAD END WITH CAP		STRAINER WITH BLOWDOWN		COND CONDENSATE DRAIN
	INLINE PIPE DROP		STEAM TRAP		CUNH CUPBOARD UNIT HEATER
	INLINE PIPE RISE		TEMPERATURE SENSOR		CWR CONDENSER WATER RETURN
	MANUAL FLOW CONTROL VALVE		THERMOSTATIC MIXING VALVE		CWS CHILLED WATER SUPPLY
	MANUAL AIR VENT		2-WAY CONTROL VALVE		ET EXPANSION TANK
	METER		3-WAY CONTROL VALVE		F FURNACE
			UNION		FD FIRE DAMPER
MECHANICAL SYMBOLS			GENERAL LINE TYPES		
	BACKDRAFT DAMPER		FLEXIBLE DUCT		FM FLOW METER
	COMBINATION SMOKE/FIRE DAMPER		INLINE PUMP		FTR FINNED TUBE RADIATION
	CONTROL DAMPER ACTUATOR		MANUAL AIR VENT		HPSR HIGH PRESSURE STEAM RETURN
	DOUBLE WALL DUCTWORK		OPPOSED BLADE BALANCE DAMPER		HPSS HIGH PRESSURE STEAM SUPPLY
	DUCT CAP		RETURN/EXHAUST TRANSFER AIR GRILLE		HVAC HEATING VENTILATING AND COOLING UNIT
	DUCT MOUNTED COIL		SHUTOFF VAV BOX WITH REHEAT		HWR HOT WATER RETURN
	DUCTWORK WITH DUCT LINER		SINGLE BLADE BALANCE DAMPER		HWS HOT WATER SUPPLY
	DUCTWORK WITHOUT DUCT LINER		STRAINER		L LOWER
	FAN POWERED VAV BOX WITH REHEAT		STRAINER WITH BLOWDOWN		LPSS LOW PRESSURE STEAM SUPPLY
	FIRE DAMPER		SUPPLY AIR DIFFUSER		LPSS LOW PRESSURE STEAM RETURN
	FIRE DAMPER		TEMPERATURE SENSOR		LRP LINEAR RADIANT PANEL
	FIRE DAMPER		THERMOMETER		MAU MAKE-UP AIR UNIT
	FIRE DAMPER		UNIT HEATER		OAC OPENING ABOVE CEILING
	FIRE DAMPER		WALL MOUNTED PRESSURE GAUGE		P PUMP
					RA RETURN AIR
					RAD RADIANT HEATER
					REL RETURN AIR
					RET RELIEF AIR
					RC ROOF CAP
					RF RELIEF FAN
					RG RETURN GRILLE
					RTU ROOFTOP UNIT
					RV RELIEF VENT
					SA SUPPLY AIR
					SFD SMOKE FIRE DAMPER
					SR SUPPLY REGISTER
					TG TRANSFER GRILLE
					UH UNIT HEATER
					UV UNIT VENTILATOR
					VAV VARIABLE AIR VOLUME BOX
GENERAL SYMBOLS			GENERAL SYMBOLS		
	EXTENT OF DEMOLITION		TIE-IN OF NEW TO EXISTING		
MECHANICAL CONTROL SYMBOLS			MECHANICAL CONTROL SYMBOLS		
	CARBON DIOXIDE SENSOR		THERMOSTAT		
	CARBON MONOXIDE SENSOR		THERMOSTAT (LINE VOLTAGE)		
	DUCT OR PIPE PRESSURE SENSOR		THERMOSTAT WITH HUMIDISTAT AND CO2 SENSOR		
	SECURITY TYPE THERMOSTAT		HUMIDISTAT		
	PNEUMATIC THERMOSTAT		DIFFERENTIAL PRESSURE SENSOR		

CONTROLS RESPONSIBILITY CHART				
ITEM	MECHANICAL CONTRACTOR	ELECTRICAL CONTRACTOR	REMARKS	
INSTALL INTERIOR AND EXTERIOR LOW VOLTAGE CABLING AND CONDUIT	X			
ROUGH-IN OF THERMOSTAT WALL BOXES	X			
FURNISH CONTROL VALVES	X			
INSTALL CONTROL VALVES	X	X		
FURNISH PIPE WELLS FOR SENSORS	X			
INSTALL PIPE WELLS FOR SENSORS		X		
PROVIDE 120 VOLT POWER FOR CONTROL PANELS	X		X	
PROVIDE 120 VOLT POWER BETWEEN SLAVE PANELS				
PROVIDE INTERLOCK WIRING BETWEEN DEVICES, PANELS, BOILERS, CHILLERS, ETC		X		1
FURNISH VARIABLE SPEED DRIVES	X		X	2
INSTALL VARIABLE SPEED DRIVES		X		2
PROVIDE LINE AND LOAD WIRING TO VARIABLE SPEED DRIVES		X		
PROVIDE CONTROL WIRING TO VSD	X			
PROGRAM AND STARTUP VSD	X			
PROVIDE 120 VOLT POWER TO CONTROLS	X		X	
FURNISH CONTROL DAMPERS	X	X		3
INSTALL CONTROL DAMPERS		X		
FURNISH DAMPER ACTUATORS	X			
INSTALL DAMPER ACTUATORS	X			
WIRE LOW VOLTAGE ACTUATORS	X		X	
PROGRAM AND COMMISSION BOILER SEQUENCER		X		
PROGRAM AND COMMISSION CHILLER SEQUENCER		X		
COORDINATE PROJECT SCHEDULE WITH ALL TRADES	X		X	
PROVIDE SHOP DRAWINGS TO ALL TRADES	X	X		
VERIFY AND TEST SEQUENCE OF OPERATIONS	X			
TERMINATE DUCT DETECTORS	X			
ROOF PENETRATIONS FOR TEMPERATURE CONTROLS	X	X		4
EXTERIOR WALL PENETRATIONS FOR TEMPERATURE CONTROLS	X			
PROVIDE DUCT DETECTORS		X		
PROVIDE 120 VOLT POWER TO SOLENOID VALVES		X		5
PROVIDE LOW VOLTAGE CABLING TO SOLENOID VALVES	X			5
PROVIDE AND INSTALL REFRIGERANT MONITORING SYSTEM	X			
REMARKS:				
1. MECHANICAL CONTRACTOR/MANUFACTURER SHALL PROVIDE AND INSTALL ALL ASSOCIATED INTERLOCK WIRING AND DEVICES FOR A COMPLETE UNIT.				
2. PACKAGED VSDS INTERNAL TO HVAC EQUIPMENTED SHALL BE FURNISHED BY EQUIPMENT MANUFACTURER UNLESS NOTED OTHERWISE. REFER TO EQUIPMENT SCHEDULES FOR VSDS TO BE FURNISHED BY EQUIPMENT MANUFACTURER.				
3. PACKAGED CONTROL DAMPERS INTEGRAL TO HVAC EQUIPMENT SHALL BE FURNISHED BY EQUIPMENT MANUFACTURER UNLESS NOTED OTHERWISE. REFER TO EQUIPMENT SCHEDULES AND DETAILS FOR MORE INFORMATION.				
4. COORDINATE WITH GC FOR ROOF PENETRATIONS.				
5. COORDINATE WITH MC FOR REFRIGERANT AND GAS PIPING SOLENOID VALVE LOCATIONS.				

GENERAL MECHANICAL NOTES			
1.	DUCT AND PIPING LAYOUTS ARE SCHEMATIC IN NATURE. ADDITIONAL TRANSITIONS, ELBOWS, OFFSETS, AND FITTINGS SHALL BE ADDED AS REQUIRED TO COORDINATE WITH OBSTRUCTIONS AND OTHER TRADES.		
2.	COORDINATE ALL WORK WITH OTHERS TRADES AND EXISTING WORK TO PERMIT ACCESS AND SERVICE CLEARANCES TO ALL SYSTEMS. COORDINATE DUCT WITH ELECTRICAL JOBS TO PREVENT OBSTRUCTIONS.		
3.	DO NOT SCALE DRAWINGS FOR DIMENSIONS. REFER TO DIMENSIONED DRAWINGS.		
4.	ALL GRILLES, DIFFUSERS, AND REGISTERS SHALL HAVE A VOLUME CONTROL DAMPER UNLESS NOTED OTHERWISE. DAMPER SHALL BE IN AN ACCESSIBLE LOCATION.		
5.	REFER TO DETAIL SHEETS FOR ADDITIONAL INFORMATION ON INSTALLATION METHODS.		
6.	DEVIATIONS FROM BASIS OF DESIGN THAT AFFECT OTHER TRADES ARE THE RESPONSIBILITY OF THIS CONTRACTOR. ADDITIONAL COSTS TO PROVIDE LARGER ELECTRICAL CIRCUITS, MORE FLOOR SPACE, ADDITIONAL SUPPORTS, ADDITIONAL MATERIALS, ETC. SHALL BE BORNE BY THIS CONTRACTOR. COORDINATE WITH OTHER TRADES.		
7.	ALL THERMOSTAT/HUMIDITY SENSORS WITH ADJUSTMENT BUTTONS/SLIDERS/KNOBS/DISPLAYS, ETC. SHALL BE MOUNTED WITH THE TOP OF THE DEVICE NO MORE THAN 48" AFF. IN COMPLIANCE WITH LOCAL AND NATIONAL WHEELCHAIR REACH DISTANCE GUIDELINES. PROVIDE ADDITIONAL SURFACE RACEWAY, BOXES, CONDUIT, ETC AS REQUIRED TO OFFSET AROUND EXISTING DEVICES IN RENOVATION WORK.		
8.	ALL DUCT SIZES LISTED ARE FOR INTERIOR FREE AREA. ANY DUCTS DESIGNATED OR SPECIFIED TO BE DOUBLE WALL OR INTERNALLY LINED SHALL HAVE OUTER DIMENSIONS ENLARGED TO ACCOMMODATE THE LINER OR INTERSTITIAL INSULATION.		

GENERAL DEMOLITION NOTES			
1.	ALL EXISTING PENETRATIONS FROM DUCT/PIPE/WIRE/CONDUIT THAT IS REMOVED SHALL BE PATCHED BY PROPER TRADES TO MATCH SURROUNDINGS UNLESS PENETRATION IS TO BE REUSED. PATCH ALL FLOOR AND WALL PENETRATIONS TO MAINTAIN FIRE RATED CONSTRUCTION.		
2.	ALL ROOF PENETRATIONS NOT BEING REUSED SHALL BE PATCHED TO MAINTAIN EXISTING ROOF WARRANTY. EXISTING CURBS TO BE ABANDONED SHALL BE CAPPED WITH ALUMINUM HOOD PAINTED WITH "N.I.S." (NOT IN SERVICE). INSULATE CAVITY BELOW CAP WITH TIGHT FITTING 3" FOAM BOARD WRAPPED WITH SHEET METAL.		
3.	ALL PIPE SHALL BE REMOVED TO WITHIN AREAS THAT ARE INACCESSIBLE SUCH AS WALL CAVITIES AND BELOW SLAB. IN FINISHED SPACES REMOVE BELOW SURFACE. CAP WATER TIGHT, AND PATCH SURFACE TO MATCH SURROUNDINGS.		
4.	ALL PATCHING OF WALLS SHALL MATCH MATERIALS AND WHEN COMPLETE SHALL NOT LOOK LIKE A PATCH.		
5.	TOOTH-IN NEW BRICK/ BLOCK WITH FULL UNITS. DO NOT CUT FILLER PIECES.		
6.	PRIOR TO CUTTING EXISTING SLAB ON GRADE, CONTRACTOR SHALL VERIFY EXISTENCE OF EXISTING UTILITIES SUCH AS PIPING, CONDUIT, WIRE, ETC. BY MEANS OF GROUND PENETRATING RADAR TO LOCATE AND DETERMINE DEPTH OF BURIAL. TAKE PRECAUTIONS TO DE-ENERGIZE POWER TO CIRCUITS AND CAREFULLY CUT AND REMOVE SLAB. ANY UTILITIES THAT WERE LOCATED AND SUBSEQUENTLY DAMAGED SHALL BE REPAIRED BY THE CONTRACTOR AT NO ADDED COST TO THE OWNER.		



- DEMOLITION PLAN NOTES**
1. REMOVE EXISTING CONTROLS COMPLETE INCLUDING ASSOCIATED WIRING, WIREMOLD, AND MOUNTING DEVICES. PREPARE REMAINING EQUIPMENT TO RECEIVE NEW CONTROLS. REFER TO CONTROLS DETAILS ON MD01 FOR MORE INFORMATION.
  2. REMOVE EXISTING THERMOSTAT COMPLETE INCLUDING ASSOCIATED WIRING, WIREMOLD, AND MOUNTING DEVICES.
  3. REMOVE EXISTING UNIT VENTILATOR COMPLETE INCLUDING ASSOCIATED PIPING, MOUNTING DEVICES, AND CONTROLS.
  4. DISCONNECT AND REMOVE EXISTING PIPING COMPLETE INCLUDING ASSOCIATED HANGERS. CAP REMAINING PIPING AT NEAREST ACTIVE MAIN.
  5. DISCONNECT AND REMOVE EXISTING FAN COIL UNIT COMPLETE INCLUDING ASSOCIATED PIPING, MOUNTING DEVICES, AND CONTROLS. PREPARE REMAINING PIPING FOR RECONNECT WITH NEW.
  6. EXISTING LOUVER TO REMAIN. REMOVE EXISTING BIRD SCREEN. REMOVE ALL DIRT, DEBRIS, AND OBSTRUCTIONS. PREPARE LOUVER FOR RECONNECT WITH NEW.
  7. REMOVE EXISTING CONDENSATE PIPING COMPLETE. PATCH REMAINING OPENING WITH COLOR MATCHING NON-SHRINK GROUT.
  8. REMOVE EXISTING SHEET METAL PIPE CHASE COMPLETE INCLUDING ASSOCIATED MOUNTING DEVICES.
  9. REMOVE EXISTING PNEUMATIC TEMPERATURE CONTROLS AIR COMPRESSOR COMPLETE INCLUDING ALL ASSOCIATED PIPING/MOUNTING DEVICES, ACCESSORIES, AND CONTROLS.
  10. REMOVE EXISTING FAN COIL UNIT COMPLETE INCLUDING ASSOCIATED PIPING, MOUNTING DEVICES, AND CONTROLS. CAP AND ABANDON ASSOCIATED PIPING AT NEAREST ACTIVE MAIN.

LANCER ASSOCIATES  
ARCHITECTURE

145 NORTH EAST STREET  
INDIANAPOLIS, IN 46204

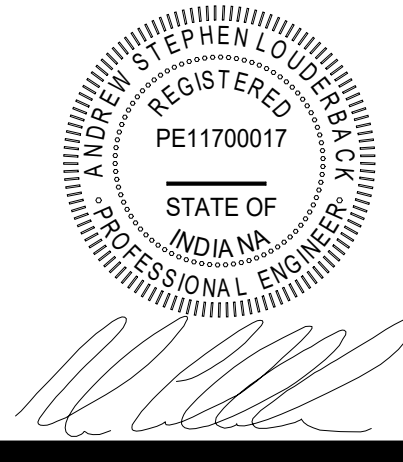
PRIMARY  
ENGINEERING INC.

Fort Wayne Indianapolis  
2828 Lake Ave. 9765 Conquest Blvd., Suite 103  
Fort Wayne, Indiana 46826 Indianapolis, Indiana 46206  
260.424.0444 (p) 317.224.1221 (p)  
primaryeng.com www.primaryeng.com

All concepts, ideas, plans, and details as shown on this document are the sole property of Primary Engineering, Inc. and shall not be used for any other purpose without their expressed written consent. The project owner shall be permitted to retain copies for information and reference purposes.  
2024 © Primary Engineering, Inc.

SUNMAN-DEARBORN COMM. SCHOOL CORP.  
RENOVATIONS TO SUNMAN ELEMENTARY SCHOOL

925 N Meridian St, Sunman, IN 47041



REVISIONS:		DATE	BY	CHKD	DESC.
1		05/20/24			ADDENDUM #1

100% CONSTRUCTION DOCUMENTS

PROJECT: #23138  
DATE: 07/24/2024  
DRAWN BY: ASL

MECHANICAL  
DEMO PLAN -  
FIRST FLOOR -  
UNIT B

MD101B

PRIMARY JOB # 24588

THIS MONOCHROME PRINT SHOULD DISPLAY GRAPHICAL NOTES BELOW IF PRINTED PROPERLY WITH 256 SHADES OF GRAY

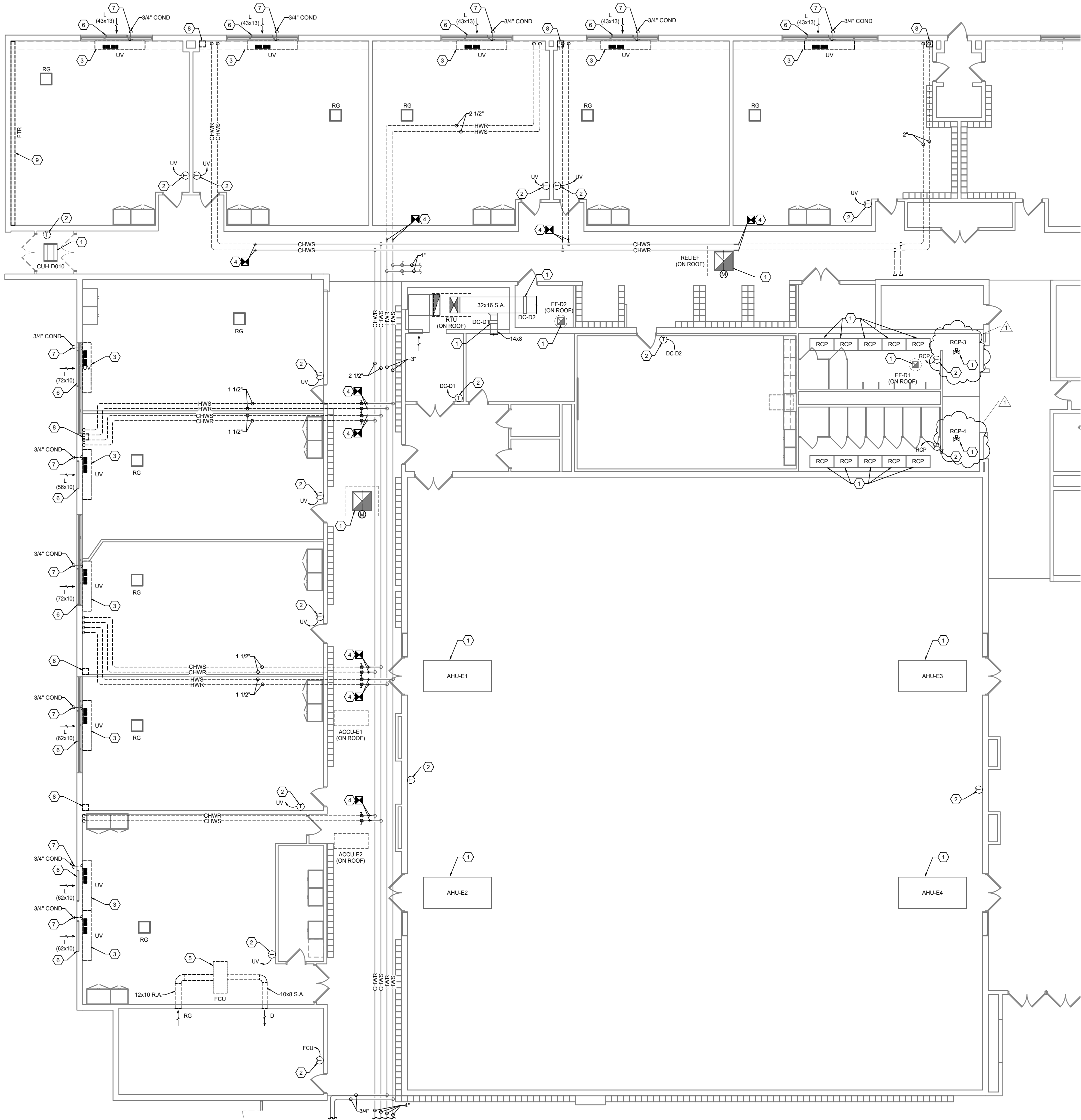


THIS MONOCHROME  
PRINT SHOULD  
DISPLAY  
GRAPHICAL NOTES  
BELOW IF PRINTED  
PROPERLY WITH  
256 SHADES OF  
GRAY

PLOT DATE: 05/20/24 9:44 AM

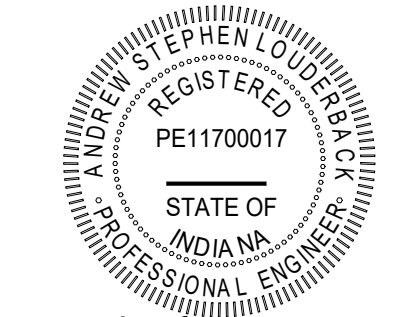
0 16 32 48 0 8 16 24 32 0 8 16 24 0 4 8 12 0 2 4 6 0 2 4 0 1 2 3  
SCALE: 1/16" = 1'-0" SCALE: 3/32" = 1'-0" SCALE: 1/8" = 1'-0" SCALE: 1/4" = 1'-0" SCALE: 1/2" = 1'-0" SCALE: 3/4" = 1'-0" SCALE: 1" = 1'-0"

# 1 MECHANICAL DEMOLITION PLAN - FIRST FLOOR - UNIT D



- ### DEMOLITION PLAN NOTES
1. REMOVE EXISTING CONTROLS COMPLETE INCLUDING ASSOCIATED WIRING AND MOUNTING DEVICES. PREPARE REMAINING EQUIPMENT TO RECEIVE NEW CONTROLS. REFER TO CONTROLS DETAILS ON MD101 FOR MORE INFORMATION.
  2. REMOVE EXISTING THERMOSTAT COMPLETE INCLUDING ASSOCIATED WIRING, WIREMOLD, AND MOUNTING DEVICES.
  3. REMOVE EXISTING UNIT VENTILATOR COMPLETE INCLUDING ASSOCIATED PIPING, MOUNTING DEVICES, AND CONTROLS.
  4. DISCONNECT AND REMOVE EXISTING PIPING COMPLETE INCLUDING ASSOCIATED HANGERS. CAP REMAINING PIPING AT NEAREST ACTIVE MAIN.
  5. REMOVE EXISTING FAN COIL UNIT COMPLETE INCLUDING ASSOCIATED PIPING, DUCTWORK, GRILLES, MOUNTING DEVICES, AND CONTROLS.
  6. EXISTING LOUVER TO REMAIN. REMOVE EXISTING BIRD SCREEN. REMOVE ALL DIRT, DUST, DEBRIS, AND OBSTRUCTIONS. PREPARE LOUVER FOR RECONNECT WITH NEW.
  7. REMOVE EXISTING CONDENSATE PIPING COMPLETE. PATCH REMAINING OPENING WITH COLOR MATCHING NON-SHRINK GROUT.
  8. REMOVE EXISTING SHEET METAL PIPE CHASE COMPLETE INCLUDING ASSOCIATED MOUNTING DEVICES.
  9. REMOVE EXISTING FINNED TUBE RADIATION COMPLETE INCLUDING ASSOCIATED PIPING, MOUNTING DEVICES, AND CONTROLS. CAP AND ABANDON REMAINING PIPING AT FLOOR PENETRATION.

SUNMAN-DEARBORN COMM. SCHOOL CORP.  
RENOVATIONS TO SUNMAN ELEMENTARY SCHOOL  
925 N Meridian St, Sunman, IN 47041



MECHANICAL  
DEMO PLAN -  
FIRST FLOOR -  
UNIT D

REVISIONS:	DATE	BY	APP
1	05/20/24	ASL	

100% CONSTRUCTION  
DOCUMENTS  
PROJECT: #23138  
DATE: 07/24/2024  
DRAWN BY: ASL

MECHANICAL  
DEMO PLAN -  
FIRST FLOOR -  
UNIT D

MD101D

PRIMARY JOB # 24588

LANCER ASSOCIATES  
ARCHITECTURE  
145 NORTH EAST STREET  
INDIANAPOLIS, IN 46204

PRIMARY  
ENGINEERING INC.  
Fort Wayne Indianapolis  
2828 Lake Ave. 8765 Conquest Blvd, Suite 103  
Fort Wayne, Indiana 46826 Indianapolis, Indiana 46206  
260-424-0444 (ph) 317-224-1221 (ph)  
www.primaryeng.com www.primaryeng.com

All concepts, ideas, plans, and details as shown on this document are the sole property of Primary Engineering, Inc. and shall not be used for any other purpose without their expressed written consent. The project owner shall be permitted to retain copies for information and reference purposes.  
2024 © Primary Engineering, Inc.