

To: All planholders for the Crescent Avenue Bridge Maintenance – 2024 Project

From: Kurt Heidenreich, PE, SE, CPESC

Crescent Avenue Bridge Maintenance – 2024
Issued February 6, 2024

ADDENDUM NO. 2

2 addendum Pages including this cover page (plus 4 pages of attachments)

Crescent Avenue Bridge Maintenance – 2024
Issued February 6, 2024

ADDENDUM NO. 2

This addendum is issued as a supplement to the plans and specifications, and shall be considered an integral part of the same.

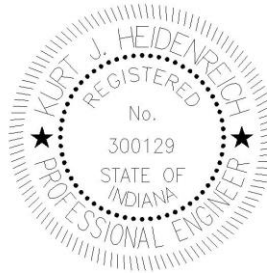
Item: 1.1
Location: Specifications
Description: Prebid meeting minutes, from 2/2/2024, are attached and made a part of the contract.

Each Contractor is responsible for incorporating all changes into their bid and indicating receipt of this Addendum on the Bid Form.

Respectfully submitted,



Kurt Heidenreich, PE, SE, CPESC
Engineering Resources, Inc.



PANEL A

100 AMPERE SPLIT BUS

120/240 VOLT SINGLE PHASE THREE WIRE

SWITCHED ENTRANCE RATED

100 AMPERE MAIN CIRCUIT BREAKER

NEMA 3R w/ PADLOCK HASP

FLUSH MOUNTED

400 KVA TYPES INTEGRAL TO PANEL

22 KA INTERRUPTING RATING

60 AMPERE 2 POLE ELECTRICALLY HELD CIRCUIT

10 CIRCUIT

TYPED DIRECTORY

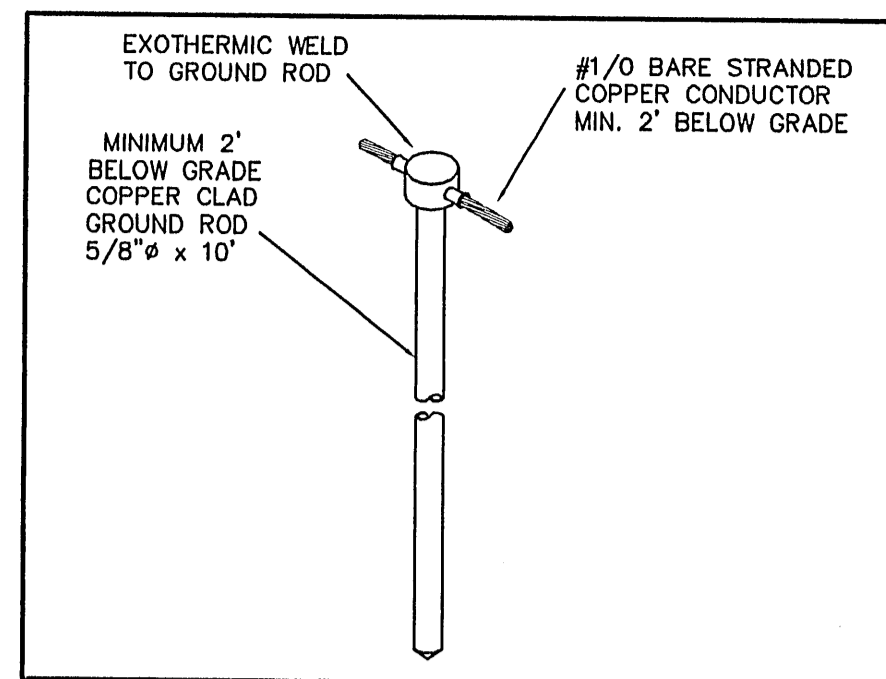
BRANCH CIRCUIT BREAKERS:

CIRCUIT NO.	QTY	BRKR	DESCRIPTION
(#1)	1	2001P	RECEPTACLES
(#2)	1	6002P	SPACED SWITCH DEVICES
(#3)	1	2001P	FUTURE LED SIGN
(#4-6)	1	6002P	CONTACTOR
(#7)	1	2001P	PHOTOCELL
(#7,8)	2	2001P	SPARES
(#9 THRU 15)	7	1P	SPACES
(SPLIT BUS w/	1	6002P	CONTACTOR)
(#16-19)	1	2002P	WEST POLE LIGHTS
(#17-19)	1	2002P	EAST POLE LIGHTS
(#20-21)	2	2001P	WALKWAY LIGHTS
(#22,23)	2	1P	SPACES
(#24 THRU 30)	7	1P	SPACES

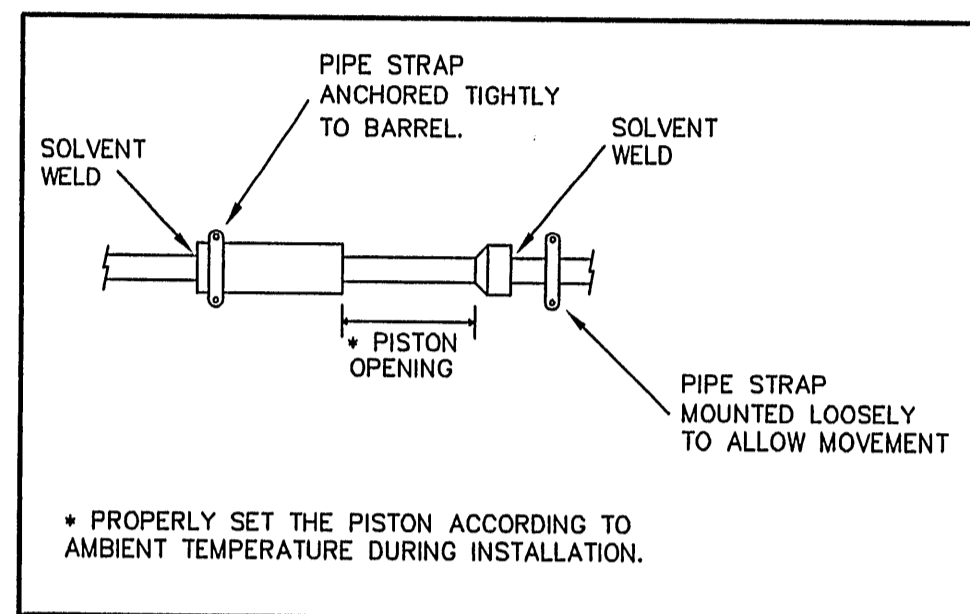


NORTH
 **EAST BRIDGE ELECTRICAL PLAN**
Scale: 1/8" = 1'-0"

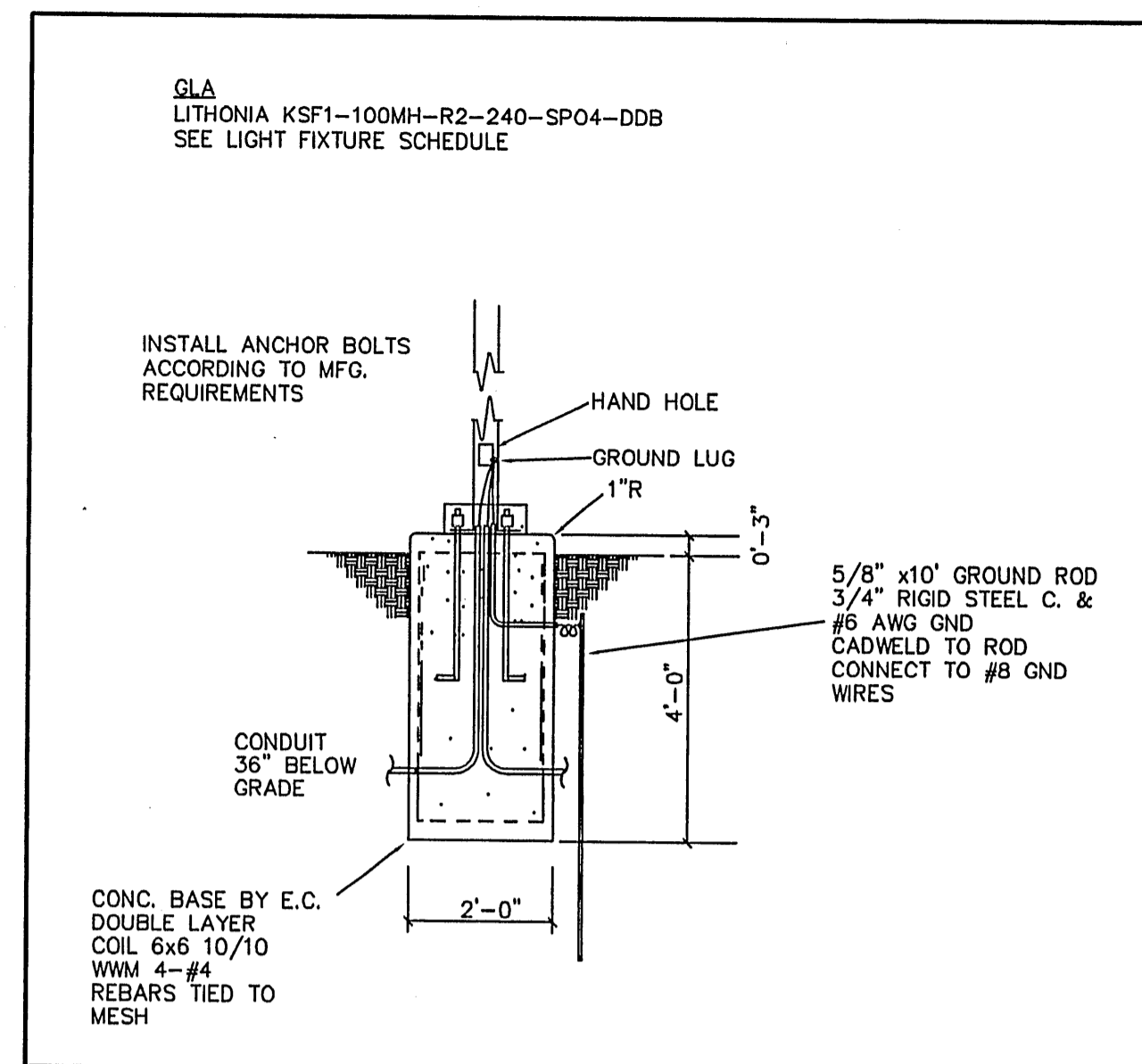
SURFACE MOUNTED ROUND METAL HALIDE LIGHT FIXTURE	
METAL HALIDE POLE LIGHT	
WALL MOUNTED ROUND METAL HALIDE LIGHT FIXTURE	
RIGID STEEL CONDUIT	RSC
POLYVINYL CHLORIDE	PVC
WEATHERPROOF	WP
GROUND FAULT CIRCUIT INTERRUPTER	GFI
TRANSIENT VOLTAGE SURGE SUPPRESSOR	TVSS
CONDUIT	C.
UNDERGROUND	UG
DUPLEX RECEPTACLE	
METER	
TRANSFORMER	
FLUSH MOUNTED PANELBOARD	
FLUSH MOUNTED PHOTOCELL	
JUNCTION BOX	
SURFACE MOUNTED SECURITY DEVICE	
EXPANSION FITTING	



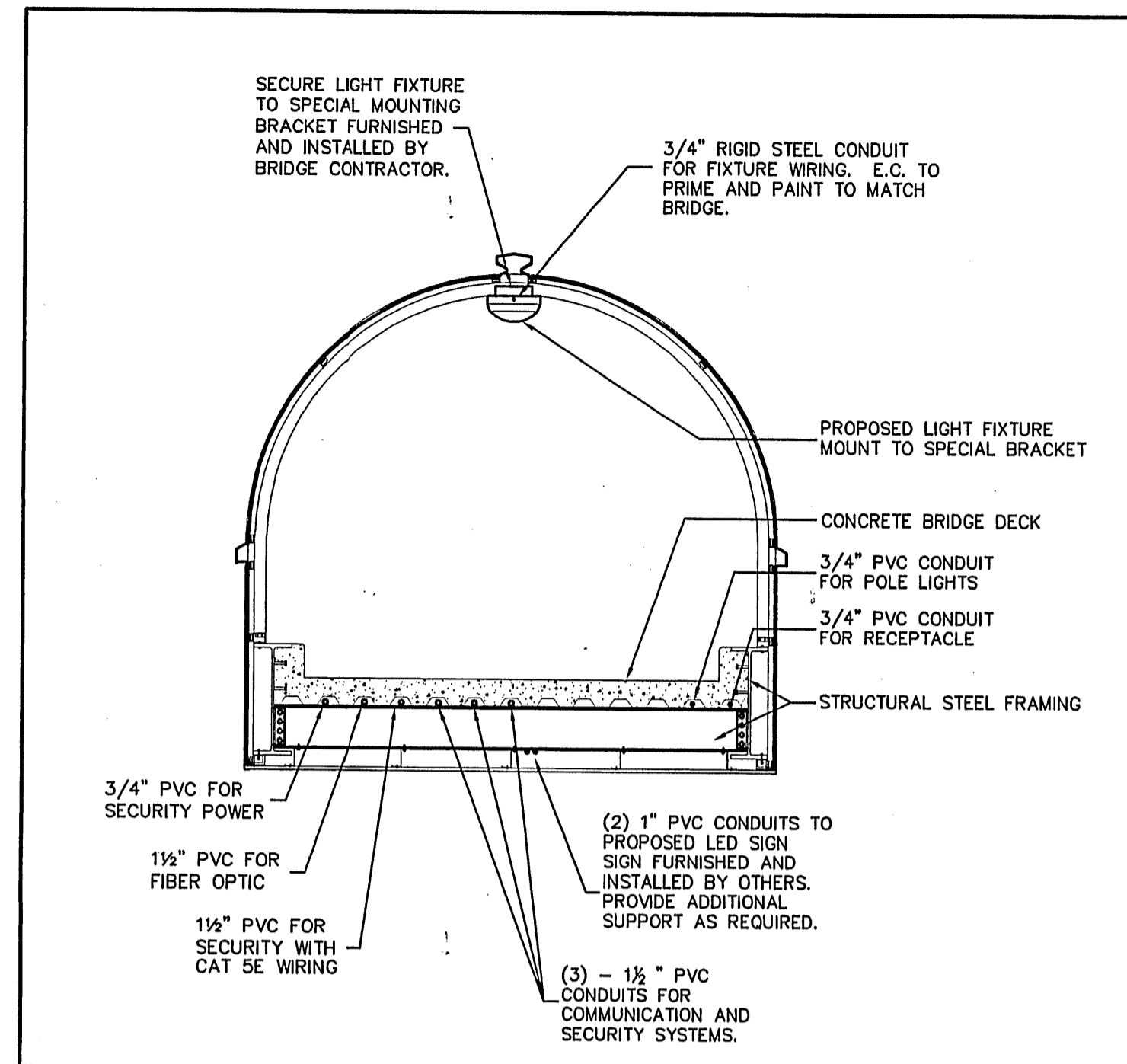
1 GROUND ROD DETAIL
Not To Scale



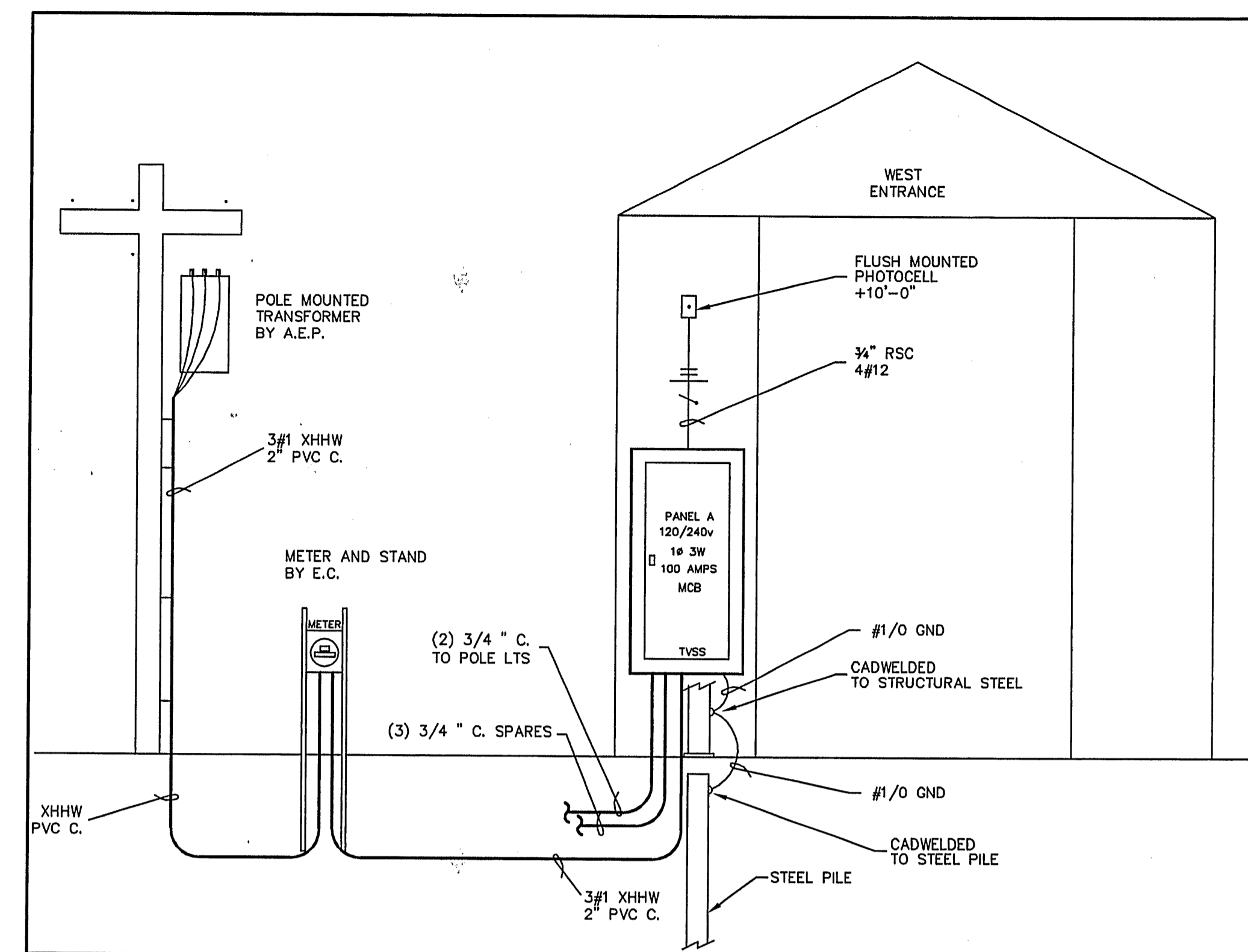
2 EXPANSION FITTING DETAIL
Not To Scale



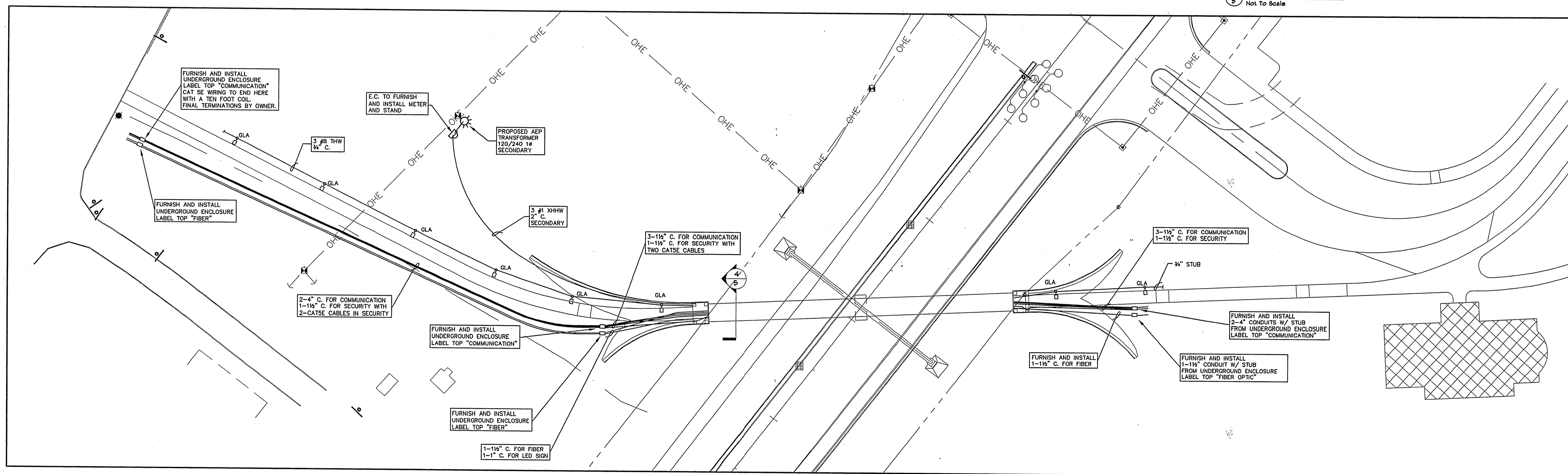
3 POLE BASE DETAIL
Scale: 1/4" = 1'-0"



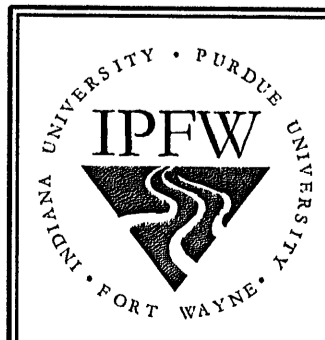
4 BRIDGE SECTION
Scale: 1/4" = 1'-0"



5 RISER DIAGRAM
Not To Scale

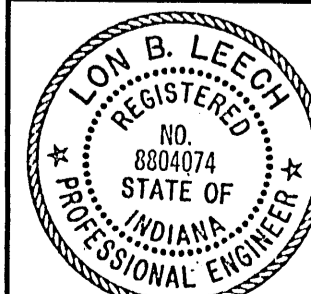


NORTH
SITE PLAN
Scale: 1" = 40'-0"



MATSON CONSULTING ENGINEERS
3131 ENGLE ROAD
FORT WAYNE, INDIANA 46809
PHONE: (219) 478-8813
FAX: (219) 478-8815

ENGINEERING Resources, Inc.
Ph: (219) 490-1025 9835 Auburn Road
Fax: (219) 490-1026 Fort Wayne, Indiana 46825



RECOMMENDED FOR APPROVAL *Lon B. Leach* 2-8-02
DESIGN ENGINEER DATE
DESIGNED: DDD DRAWN: DDD
CHECKED: CHECKED:

INDIANA
DEPARTMENT OF TRANSPORTATION
ELECTRICAL SITE PLAN AND DETAILS

HORIZONTAL SCALE	BRIDGE FILE
AS INDICATED	
VERTICAL SCALE	DESIGNATION
AS INDICATED	0088230
SURVEY BOOK	SHEETS
	25 of 25
CONTRACT	PROJECT
B-26251	STP-9902 ()



PREBID MEETING MINUTES

Crescent Avenue Bridge Maintenance - 2024

February 2, 2024, 2:00pm

GB 114 – Ginsberg Hall

ATTENDEES (SEE SIGN-IN SHEET)

The following items were discussed or presented during the meeting.

1. The Representatives of PFW and the Design Team were introduced to open the meeting.
2. The following items were presented as updates or clarification:
 - a. The Base Bid with unit prices
 - b. Alternates
 - c. Unit Prices
3. Overview of the plans/details
 - a. Reviewed the specifics regarding the deck patching/repair and embedded galvanic anodes. The contractor shall sound the deck and mark proposed patching areas for review by the engineer and owner prior to demolition or any construction activities.
 - b. The work associated with the alternatives will be authorized, based on the available budget.
4. The floor was opened to contractor questions. The following items were discussed:
 - a. The project schedule was discussed. Work is to be completed during the summer of 2024.
 - b. The bridge will be closed to public use during construction. Due to the tunnel on the west approach, access to the site will be from the student housing side. A portion of the parking lot by the commons building will be available for construction worker parking. Water is available close to the site and the bridge has some electrical power (Original Plans Attached).
 - c. Additional questions should be submitted to Kurt (kurt@eri.consulting) by February 7th, so a final addendum can be issued on February 8th if required.
5. The meeting was adjourned and the attendees were advised to complete a site visit to familiarize themselves with the project.

The above minutes were prepared by Kurt Heidenreich. These minutes will be included in the contract through addendum.

PURDUE FORT WAYNE

CRESCENT AVENUE BRIDGE MAINTENANCE - 2023

[illegible]